

The logo for Hannanmetals, featuring the company name in a dark grey sans-serif font with a green swoosh underline under the 'H'.

**TSXV: HAN**  
**OTCPINK: HANNF**  
**FRA: C8MQ**

# HANNAN METALS

Discovery of large gold and copper mineralizing systems in new frontiers

---

**21 MAR 2025**

# Disclaimer

---

**Accuracy of Information:** Readers are directed to the public disclosure of Hannan Metals Limited (“Hannan”) available under Hannan’s profile on the System for Electronic Document Analysis and Retrieval (“SEDAR”) at [www.sedar.com](http://www.sedar.com). Information contained in this presentation was believed to be accurate at the time it was posted, but may be superseded by more recent public disclosure of Hannan. Hannan makes no representations or warranties as to the accuracy, reliability, completeness or timeliness of the information in this presentation.

**Forward-Looking Information:** Some of the statements contained in this presentation may be forward-looking statements or forward-looking information within the meaning of applicable securities laws (collectively, “forward-looking statements”). All statements herein, other than statements of historical fact, are forward-looking statements. Although Hannan believes that such statements are reasonable, it can give no assurance that such expectations will prove to be correct. Forward-looking statements are typically identified by words such as: believe, expect, anticipate, intend, estimate, postulate, and similar expressions, or are those, which, by their nature, refer to future events. Hannan cautions investors that any forward-looking statements are not guarantees of future results or performance, and that actual results may differ materially from those in forward-looking statements as a result of various factors, including, but not limited to, capital and other costs varying significantly from estimates, changes in world metal markets, changes in equity markets, planned drill programs and results varying from expectations, delays in obtaining results, equipment failure, unexpected geological conditions, local community relations, dealings with non-governmental organizations, delays in operations due to permit grants, environmental and safety risks, and other risks and uncertainties. Any forward-looking statement speaks only as of the date on which it is made and, except as may be required by applicable securities laws, Hannan does not assume the obligation to revise or update forward-looking statements or information that may be contained in this presentation or to revise them to reflect the occurrence of future unanticipated events.

**Qualified Person:** The qualified person for Hannan’s projects, Michael Hudson, Executive Chairman & CEO for Hannan, and a Fellow of the Australasian Institute of Mining and Metallurgy, has reviewed and verified the contents of this presentation.

07 Nov 2024

# Overview

**A gold-copper focused exploration company attracting the support of some of the largest players in the mining space**

- ✓ Focus on new frontiers for giant discoveries
  - 69.1 m @ 2.4 g/t Au and 13 g/t Ag including:
  - 26.0 m @ 5.4 g/t Au and 27 g/t Ag



**Valiente (Peru):** multiple (up to 18) major copper-gold porphyry, skarn, epithermal systems located in a new, unexplored Miocene belt (100% owned)

- ✓ Momentum – first drill permits

- ✓ Drilling in Peru and Chile Q2 2025. Anticipating a pipeline of drill ready porphyry- alkaline epithermal targets over the next five years



**San Martin (Peru):** high-grade sediment hosted copper-silver analogous to the Central African copper belt (JOGMEC JV)

- ✓ JOGMEC (JV – San Martin) and TECK (9.9% equity) partnerships

**Cerro Rolando (Chile)** a large, blind geophysical porphyry target, drill ready

# Capital Structure

**INSIDERS:** 14%

**SHARES ON ISSUE:** 120.9m

**FULLY DILUTED:** 139.2m

**SHARE PRICE:** \$1.08 (MAR 21, 2025)

**MARKET CAP:** C\$128.9m (MAR 21, 2025)

**CASH:** C\$2.6m (NOV 30, 2024)

**WARRANTS:** 8.5m

**9.8m**

**HAN**

**HANNF**



	Price	No. of Securities	
<b>Stock Options</b>			
Expiring December 28, 2025	\$0.28	3,300,000	
Expiring March 1, 2026	\$0.28	150,000	
Expiring August 22, 2028	\$0.25	4,263,500	
Expiring September 6, 2029	\$0.60	2,036,700	9,750,200
<b>Warrants</b>			
Expiring May 9, 2026	\$0.35	3,262,230	
Expiring June 27, 2026	\$0.50	5,243,183	8,505,413



# Peru: Targeting giant metal districts

Big company land position

Hannan Tenure in Peru: 1,605 km<sup>2</sup>

Valiente 920 km<sup>2</sup>

Discovery of 18 unexplored Miocene-age porphyry copper-gold belt capable of hosting multiple mineralizing systems

San Martin 685 km<sup>2</sup>

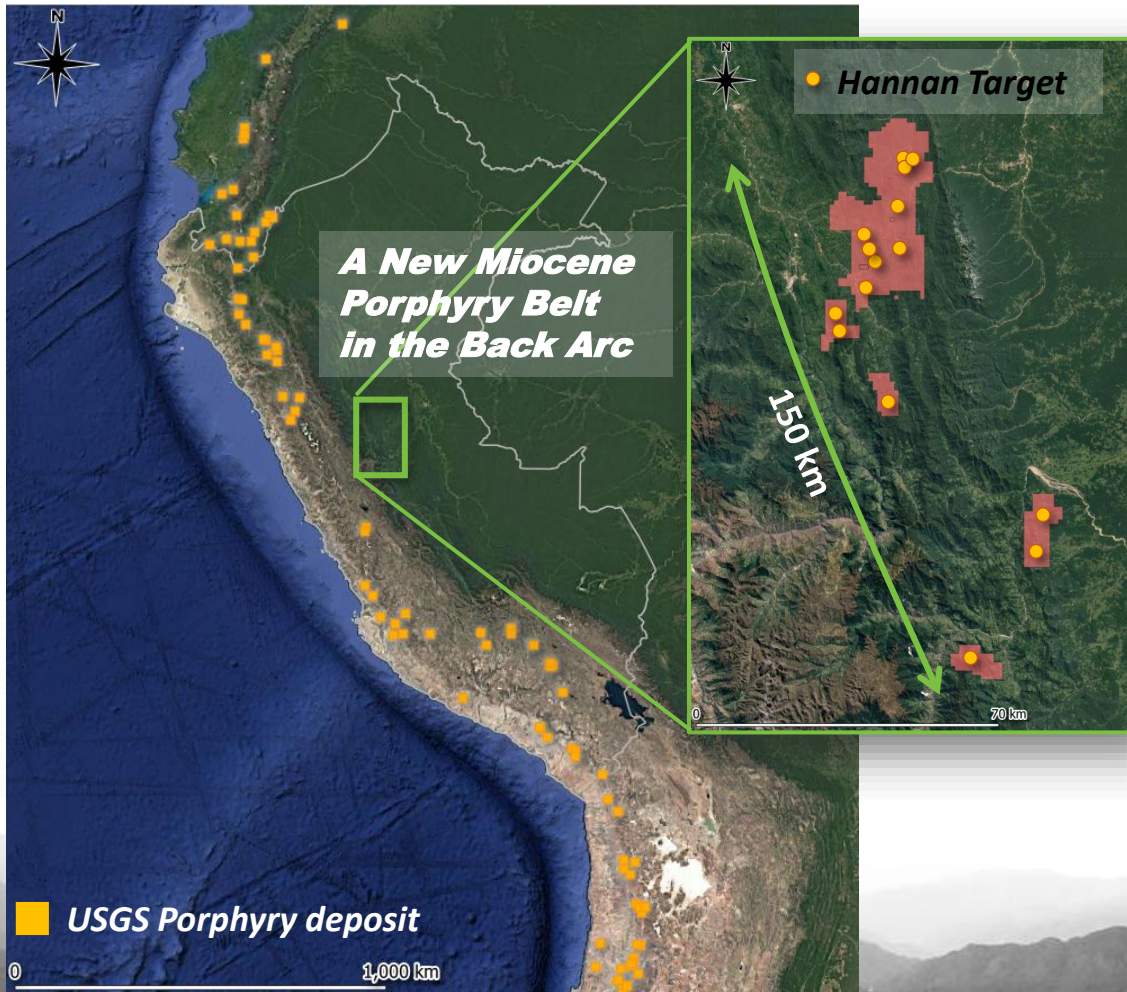
High-grade unexplored copper basin with key features analogue to the Central African Copper Belt





# Peru – Valiente: A Giant Opportunity

A unique opportunity 100 % owned by Hannan



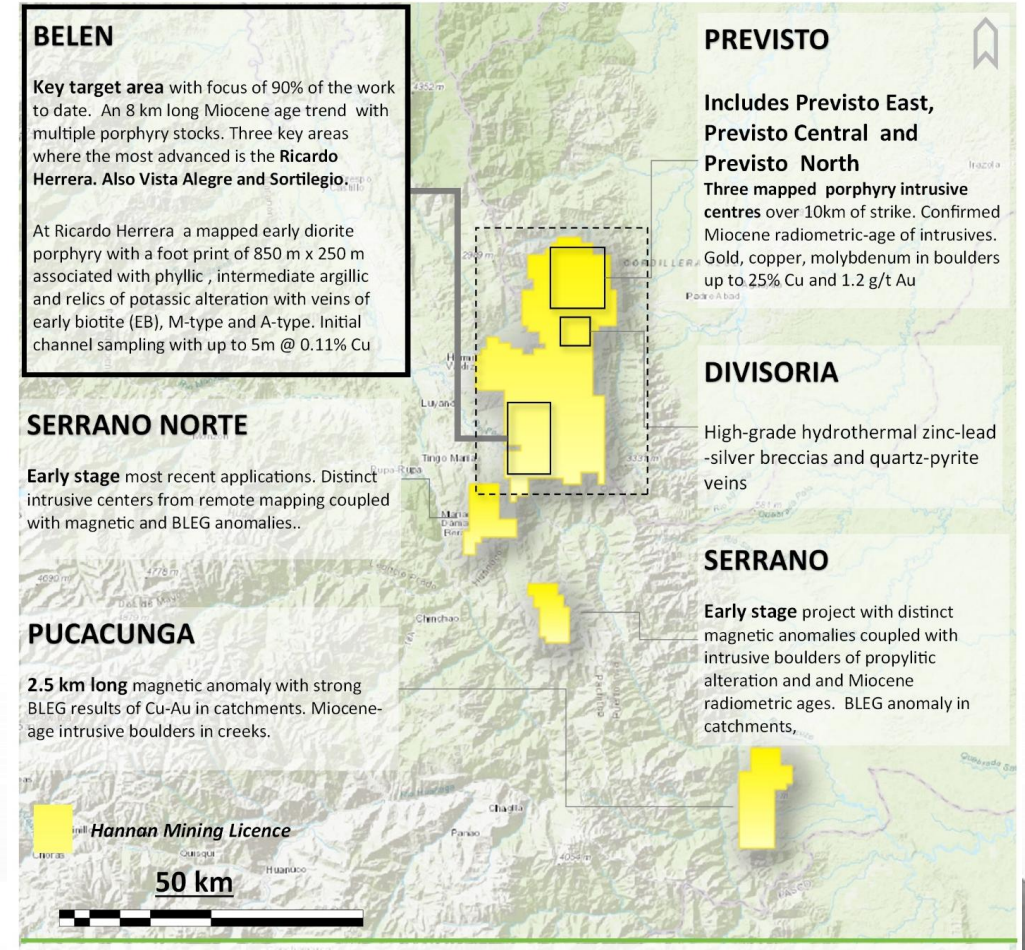
- ✓ The Valiente project is a new alkaline-epithermal and porphyry belt discovered by Hannan in the central eastern Andes.
- ✓ Cluster of 18 Miocene porphyry intrusions from calc-alkaline to alkaline character across 150 km by 40 km belt
- ✓ Hannan’s total tenure 920 sqkm
- ✓ Plan to sequentially derisk, permit and drill multiple mineralizing centres over the next 5 years



# Peru – Valiente Porphyry Cluster

A giant metal district in pre-discovery stage

- ✓ Footprint comparable to giant porphyry districts in the Andes
- ✓ Multiple intrusive events peaking at 21Ma, 15Ma and 11Ma (Miocene-age – key timing in Andes)
- ✓ Mineralized porphyry/skarn/epithermal targets identified in at least 18 areas across the whole belt.
- ✓ Pipeline of exploration targets that will deliver sequential drill results over multiple targets over the next 2-5 years.





# Previsto Giant Target Porphyry Cu-Au

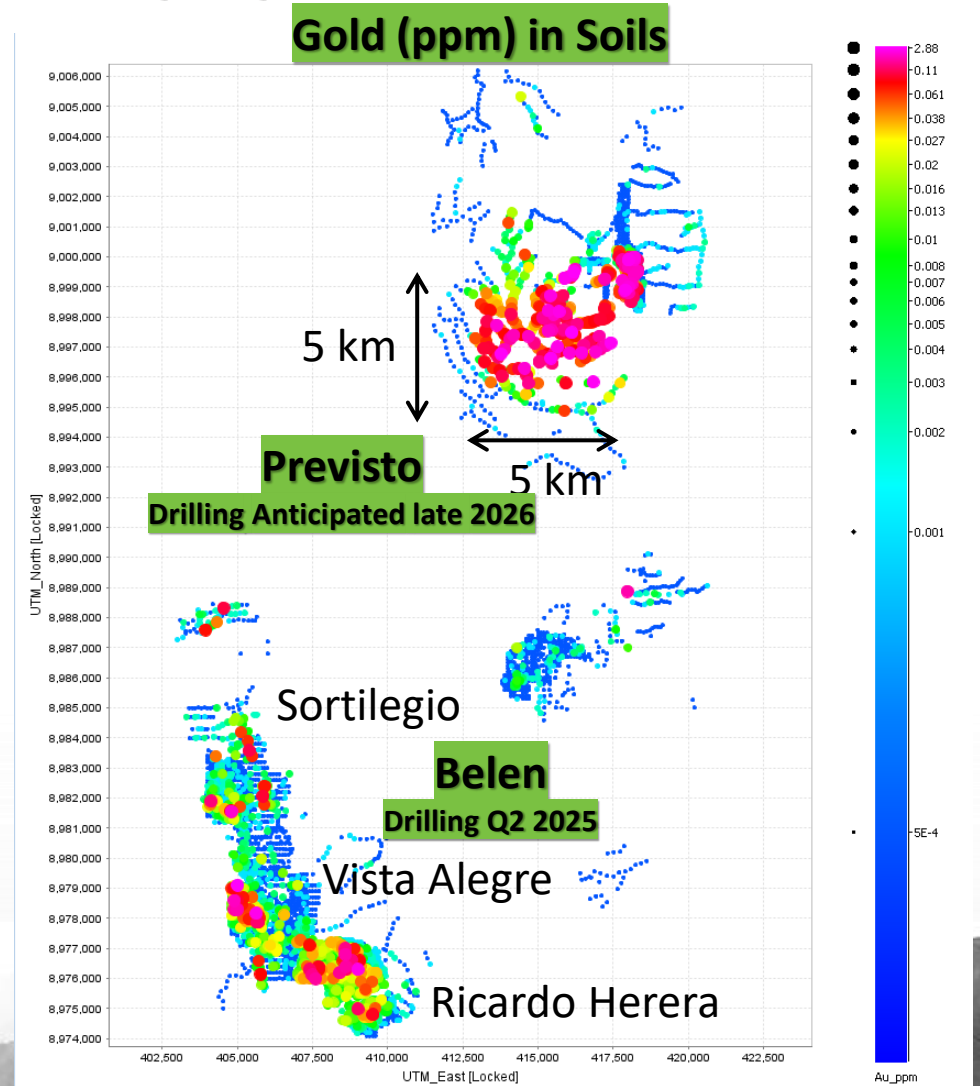
- ✓ An exceptionally large-scale target 5 km x 5 km
- ✓ Discovery - alkaline epithermal gold channels:
  - 69.1 m @ 2.4 g/t Au and 13 g/t Ag, including:
    - 26.0 m @ 5.4 g/t Au and 27 g/t Ag

Porphyry copper channels (leached) to date:

- ✓ • 126m @ 0.22 % Cu
- 192m @ 0.11 % Cu

In 2024 Hannan completed

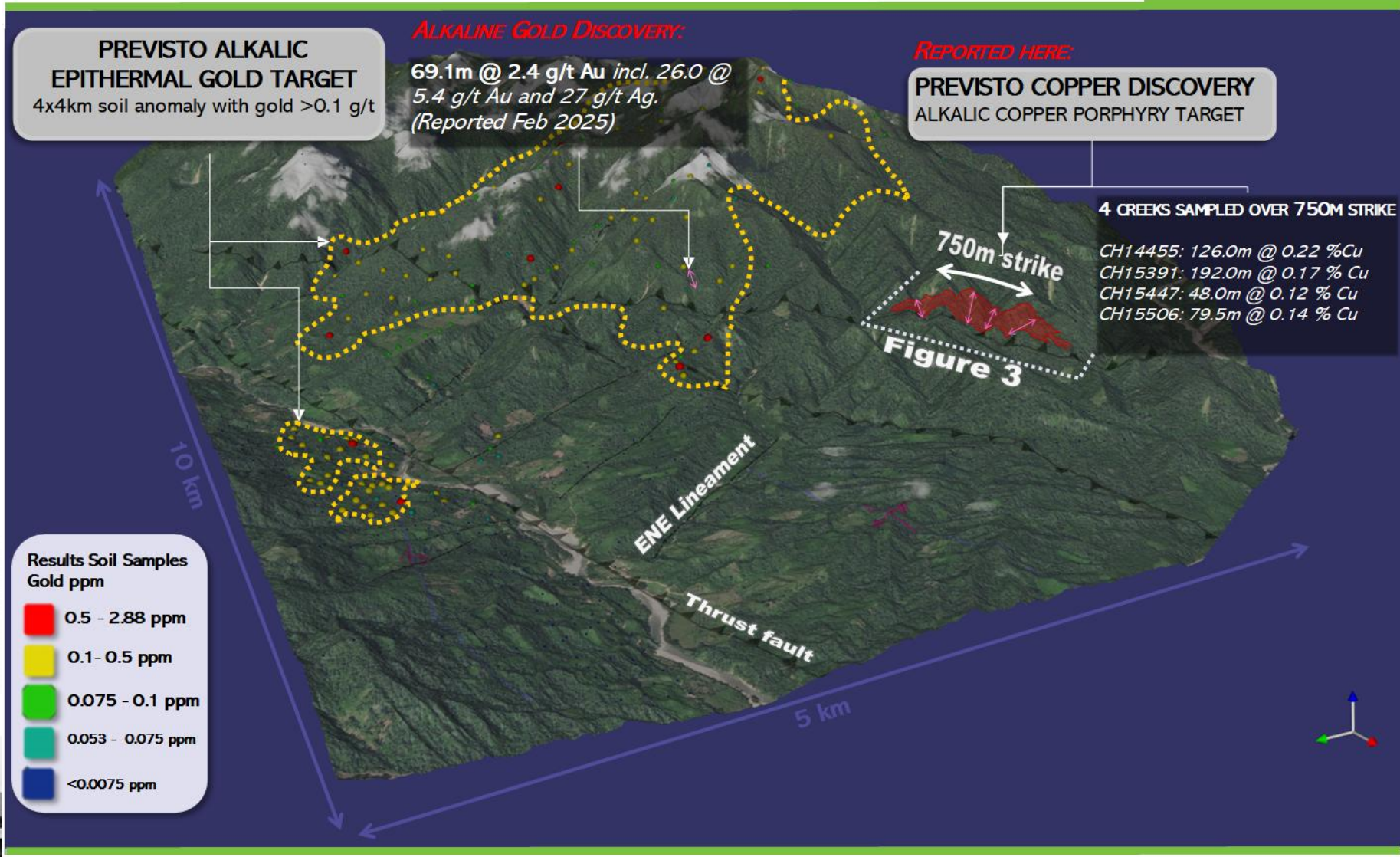
- Top ridge soil survey - infill is ongoing
- IP orientation survey over 15 line km
- High resolution LiDAR survey
- Detailed mapping and channel sampling (ongoing)
- Mapping and prospecting of creeks





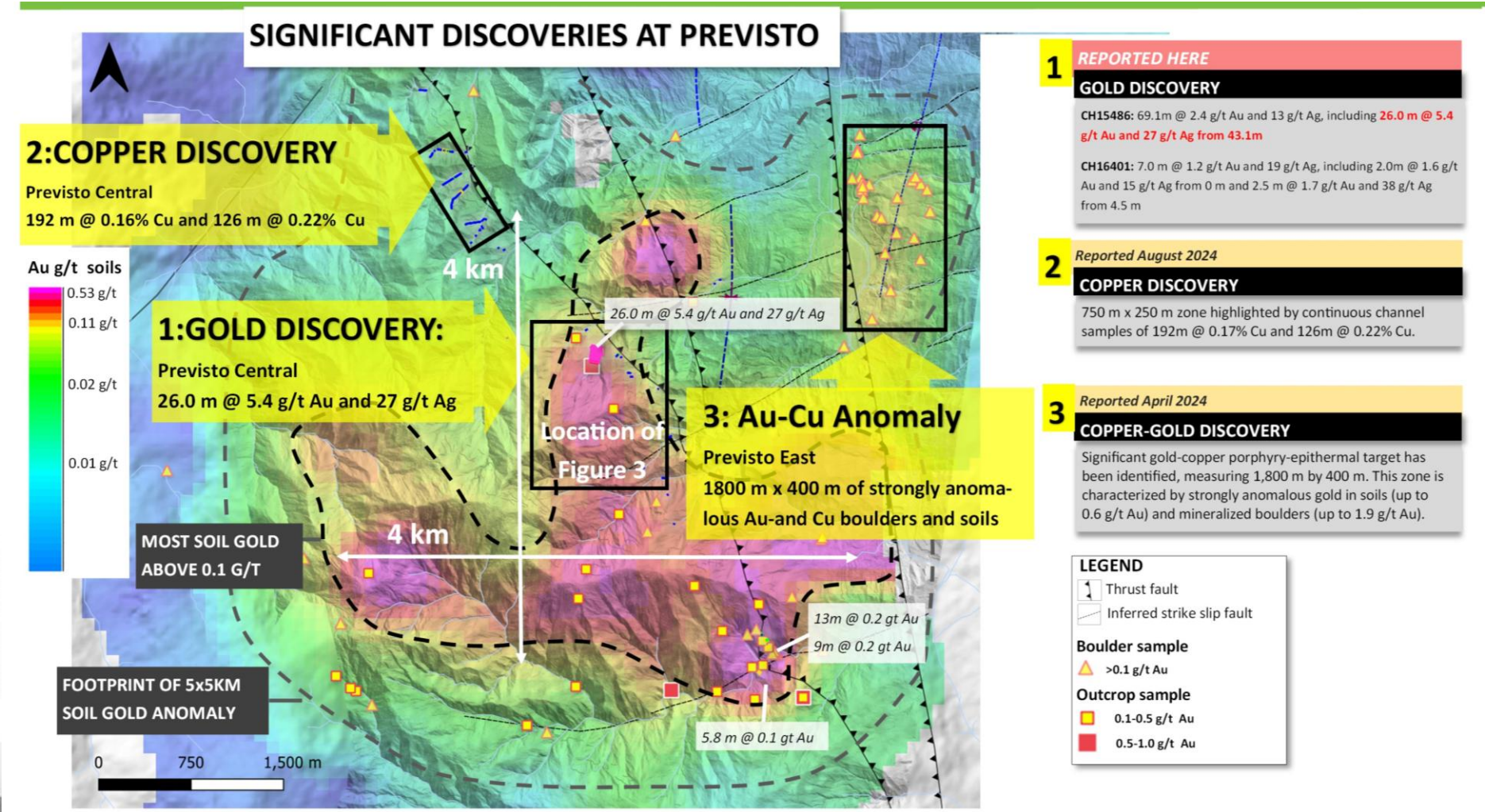


# Previsto Sampling Highlights





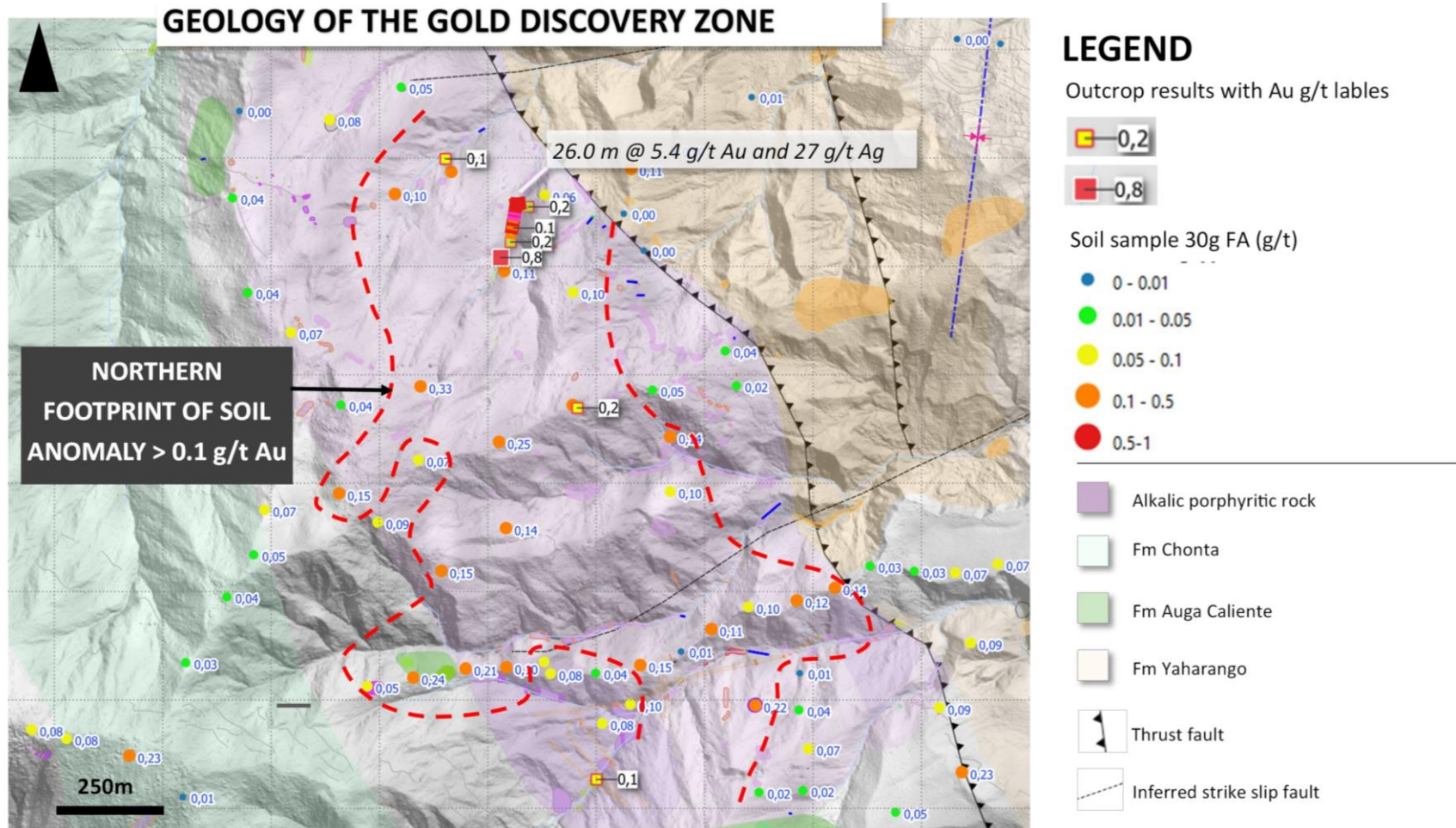
# Previsto Significant Discoveries





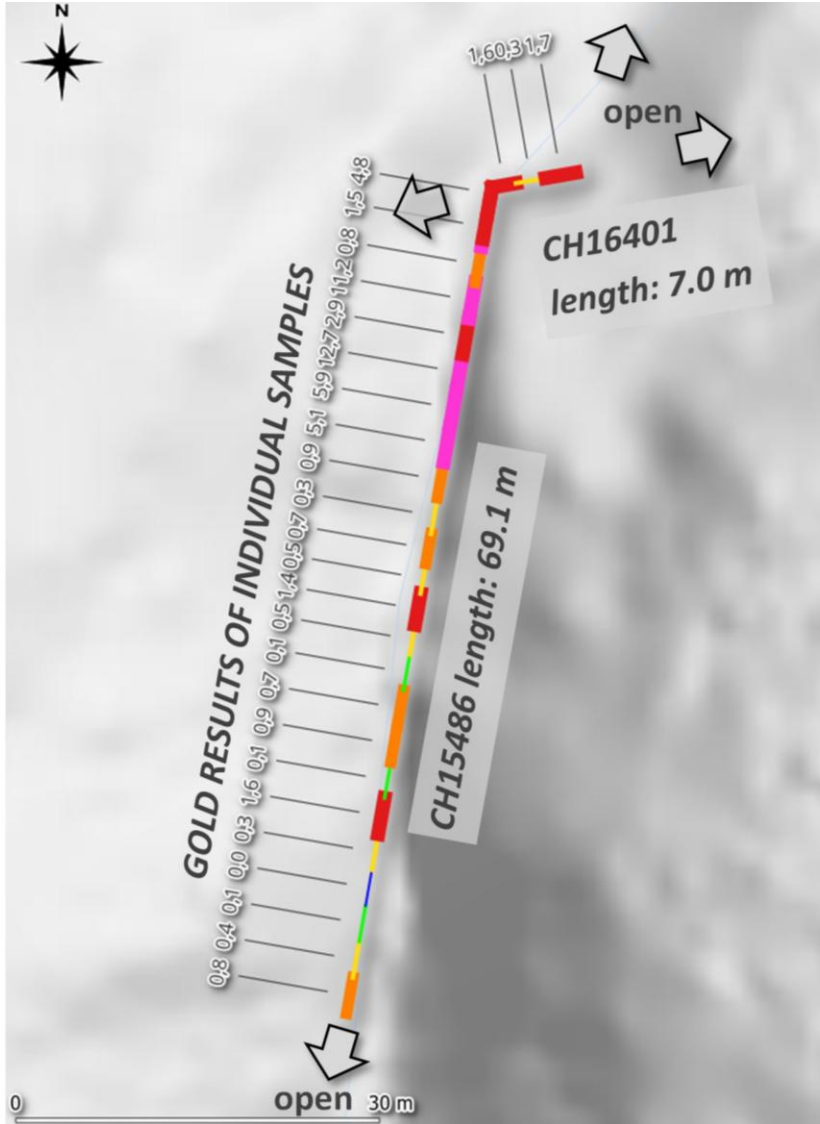
# Previsto Channels

**69.1 m @ 2.4 g/t Au and 13 g/t Ag (uncut), including:  
26.0 m @ 5.4 g/t Au and 27 g/t Ag (lower cut 3 m @ 0.8 ppm Au)**





# Previsto Channel Detail



## CHANNEL RESULTS :

**CH15486: 69.1 m @ 2.4 g/t Au and 13 g/t Ag, including:**

26.0 m @ 5.4 g/t Au and 27 g/t Ag from 43.1m

**CH16401: 7.0 m @ 1.2 g/t Au and 19 g/t Ag, including:**

2.0 m @ 1.6 g/t Au and 15 g/t Ag from 0m

2.5 m @ 1.7 g/t Au and 38 g/t Ag from 4.5m

Sample ID	From (m)	To (m)	Length (m)	Au g/t	Ag g/t	Cu ppm	Pb ppm	Zn ppm	As ppm	Mo ppm	Te ppm	V ppm
<b>CH16401 - 7m</b>												
16401	0	2	2	1.6	15	475	21	107	30	16	11	1485
16402	2	4.5	2.5	0.3	3	297	32	133	25	18	2	418
16403	4.5	7	2.5	1.7	38	639	65	67	107	414	35	5790
<b>CH15486 - 69.05m</b>												
15486	0	3	3	0.8	5	220	170	37	101	48	7	320
15487	3	6	3	0.4	5	298	121	75	52	28	3	280
15488	6	9	3	0.1	3	170	84	35	56	16	2	215
15489	9	12	3	0.0	2	203	216	40	53	31	1	196
15490	12	15	3	0.3	3	289	294	75	47	56	3	373
15491	15	18	3	1.6	3	214	193	72	39	16	3	287
15492	18	21	3	0.1	1	124	204	26	28	14	1	213
15493	21	24	3	0.9	3	90	194	18	14	10	5	348
15494	24	27	3	0.7	5	128	108	22	42	15	4	258
15495	27	30	3	0.1	4	127	80	21	17	22	2	303
15496	30	32.5	2.5	0.5	5	108	144	21	19	21	3	287
16414	32.5	35.1	2.6	1.4	10	196	210	30	27	28	13	483
16413	35.1	37.6	2.5	0.5	4	116	67	33	21	13	9	568
16412	37.6	40.1	2.5	0.7	9	159	648	31	11	126	15	601
16411	40.1	43.1	3	0.3	7	117	686	24	15	210	7	948
16410	43.1	46.1	3	0.9	9	129	402	30	17	64	13	1530
16409	46.1	49.1	3	5.1	16	139	71	18	22	17	19	335
16408	49.1	52.1	3	5.9	23	310	65	33	58	30	22	900
16407	52.1	55.1	3	12.7	49	299	300	28	25	112	43	8530
16406	55.1	58.1	3	2.9	27	350	49	41	39	14	16	792
16405	58.1	61.1	3	11.2	53	364	65	84	52	21	36	2530
16404	61.1	64.1	3	0.8	16	360	34	70	39	18	9	1345
15100	64.1	64.75	0.65	16.1	60	378	31	48	13	17	48	10000
15099	64.75	66.75	2	1.5	15	430	22	129	39	16	8	1330
15098	66.75	68.05	1.3	3.6	27	560	29	87	39	13	20	1865
15097	68.05	69.05	1	4.8	19	512	25	95	34	10	11	1840



# Previsto Alkaline Epithermal Rocks



**15493**  
Grey silica pyrite alteration  
3m @ : 0.89g/t Au, 3g/t Ag, 5ppm Te



**15098**  
Quartz with manganese oxide after  
rhodochrosite alteration  
1.3m @ 3.6g/t Au, 27g/t Ag, 5ppm Te



**15100**  
Shear with pervasive  
roscoelite alteration:  
0.65m @ 16.1g/tAu, 59.9g/t  
Ag, 48ppm Te



# Previsto Alkaline Epithermal Rocks

Manganese oxides – roscoelite alteration  
Assays pending



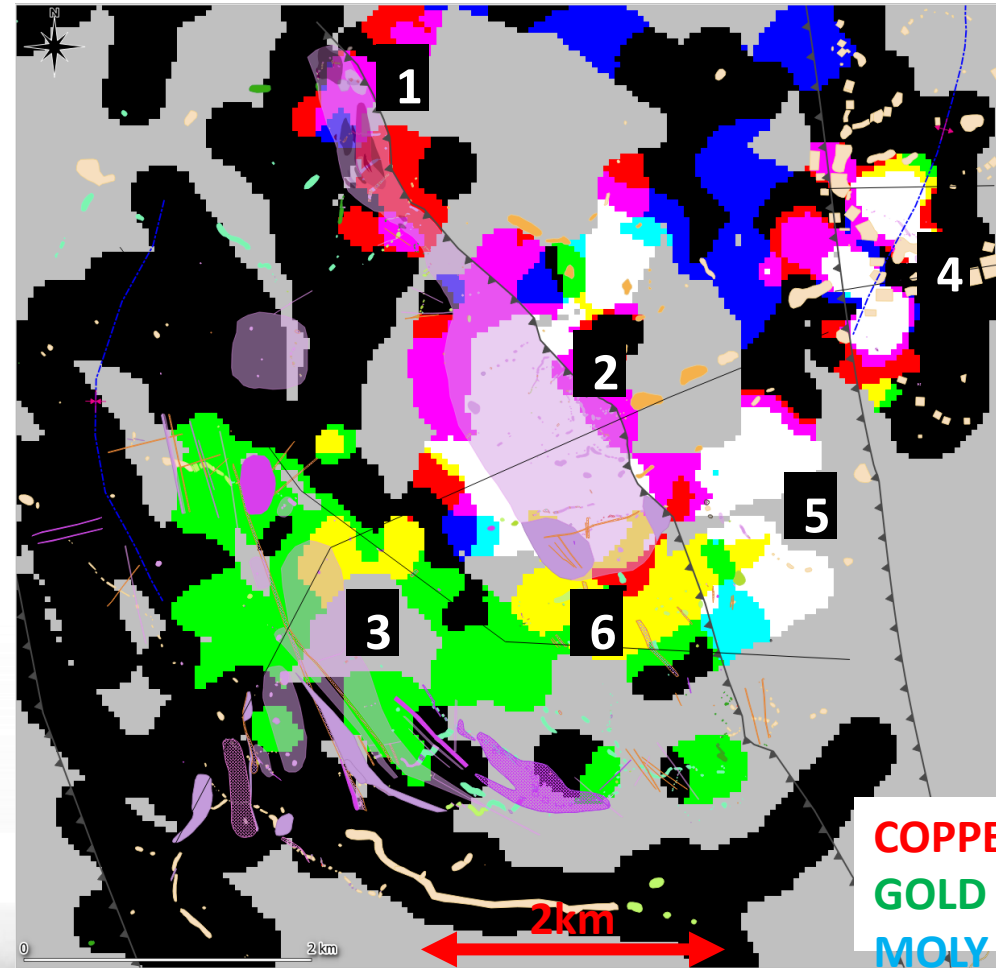
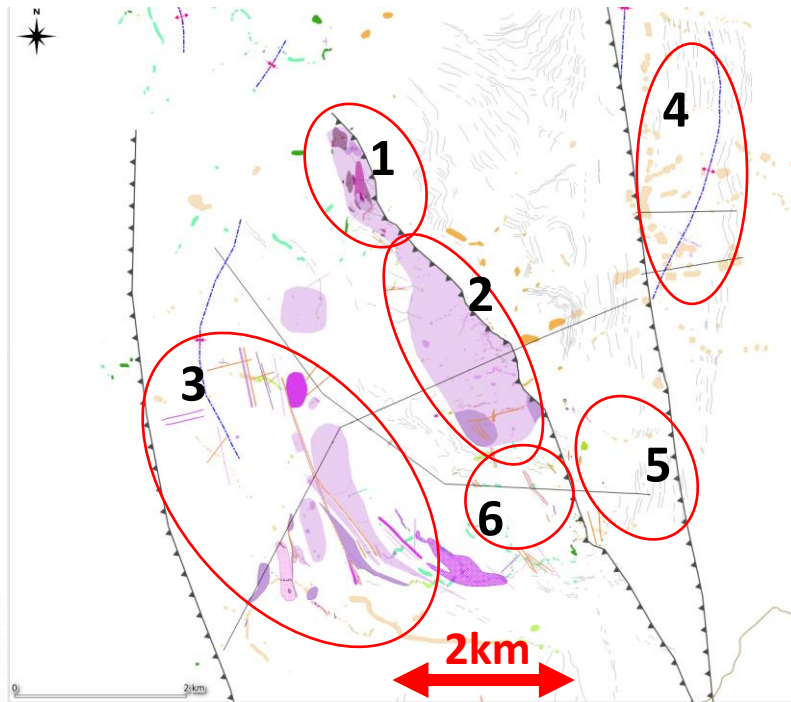
Roscoelite – quartz alteration  
Assays pending



# Previsto Soil Geochemistry

MAPPED INTRUSIONS AT PREVISTO

SOIL RGB MAP OVER THE MAPPED AREA



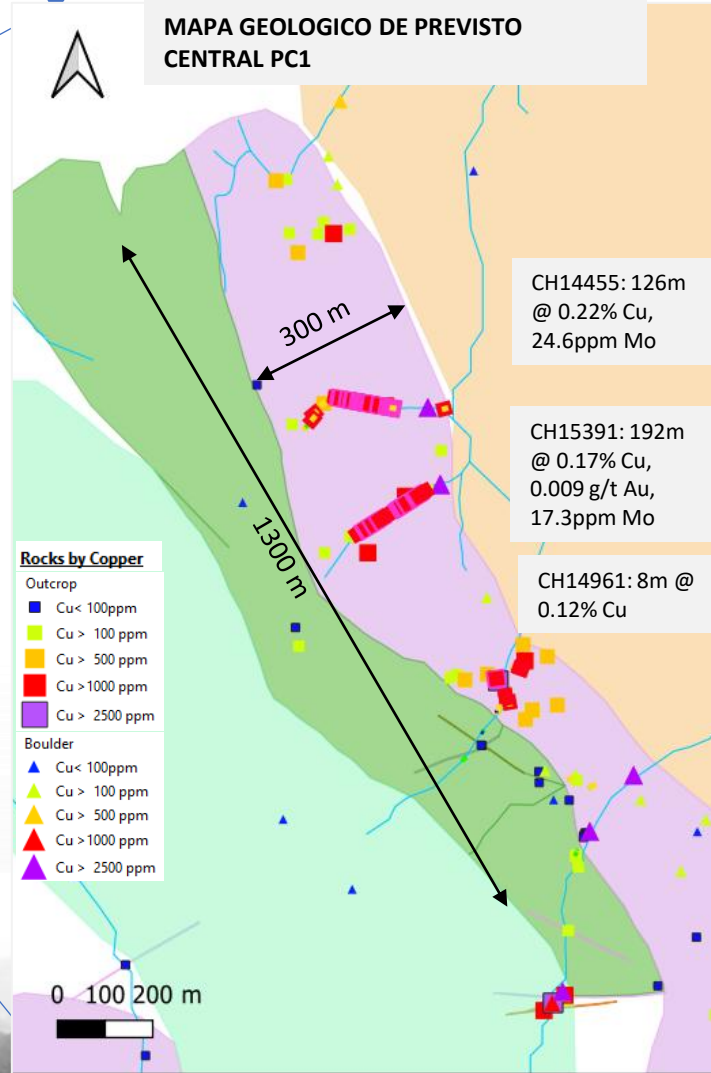
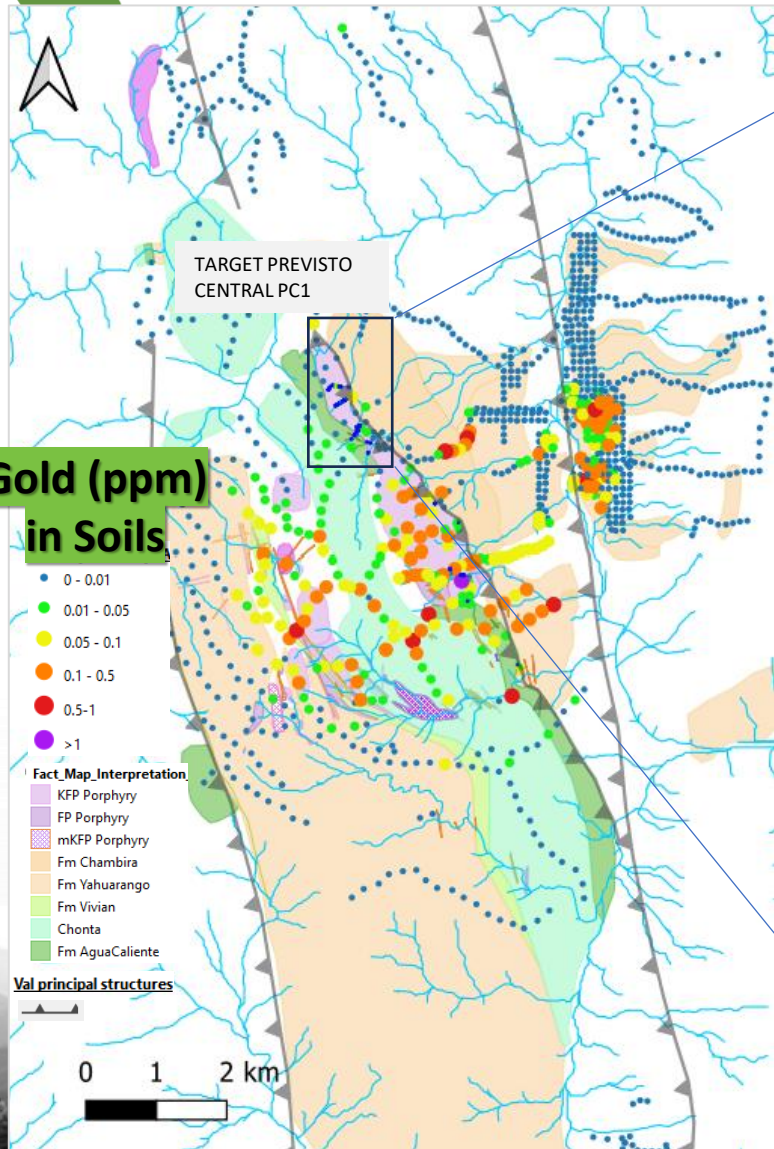
- 1: Copper
- 2: Copper-gold-moly
- 3: Gold
- 4: Copper-gold-moly
- 5: Gold
- 6: Copper-gold

- KFP Porphyry
- FP Porphyry
- mKFP Porphyry
- FHP Porphyry
- KFP Porphyry Bx
- Microdiorite
- BXH
- mKFPP

**COPPER**  
**GOLD**  
**MOLY**



# Previsto Central Porphyry Cu-Au



CH14455: 126m @ 0.22% Cu, 24.6ppm Mo

CH15391: 192m @ 0.17% Cu, 0.009 g/t Au, 17.3ppm Mo

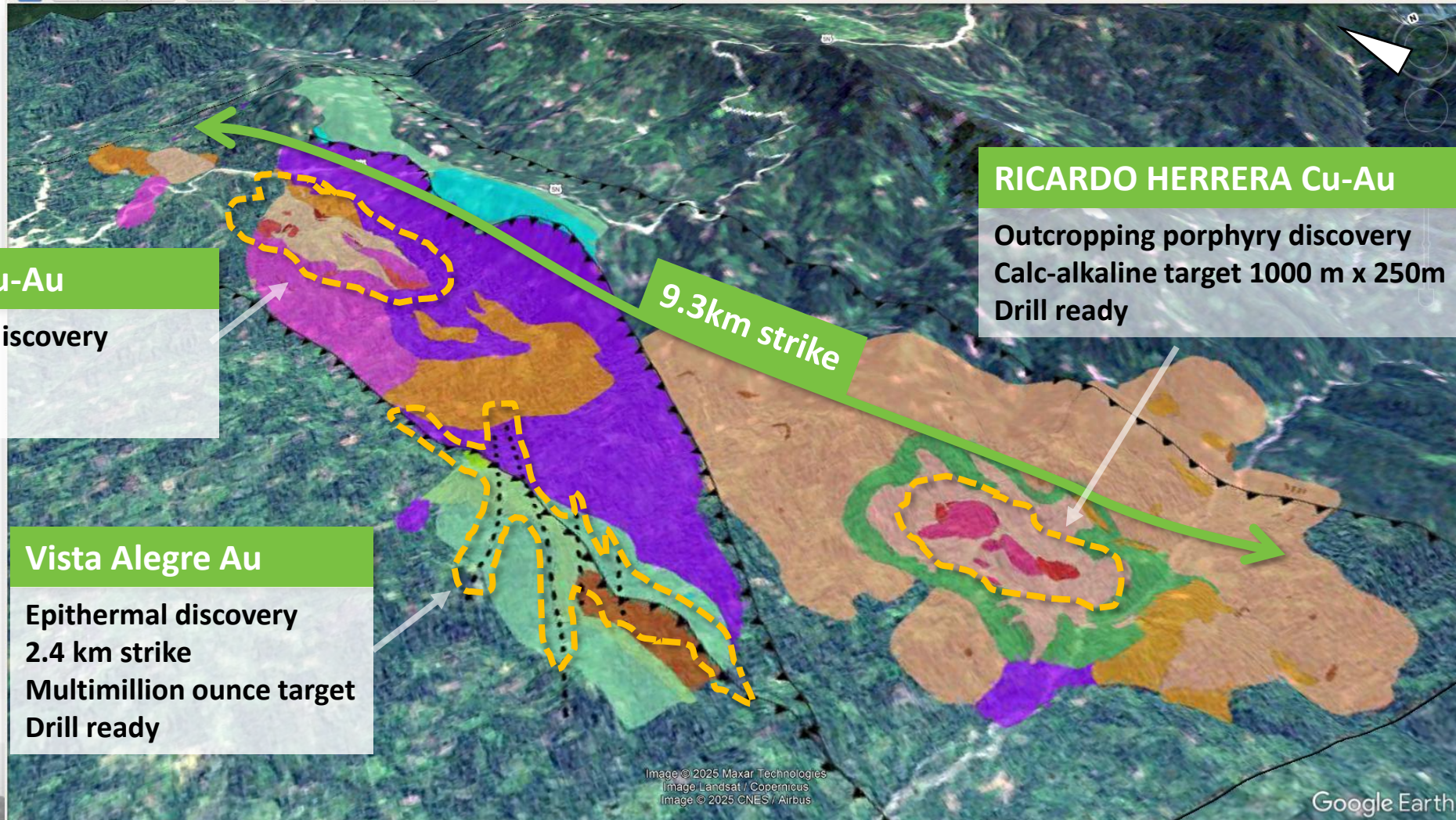
CH14961: 8m @ 0.12% Cu





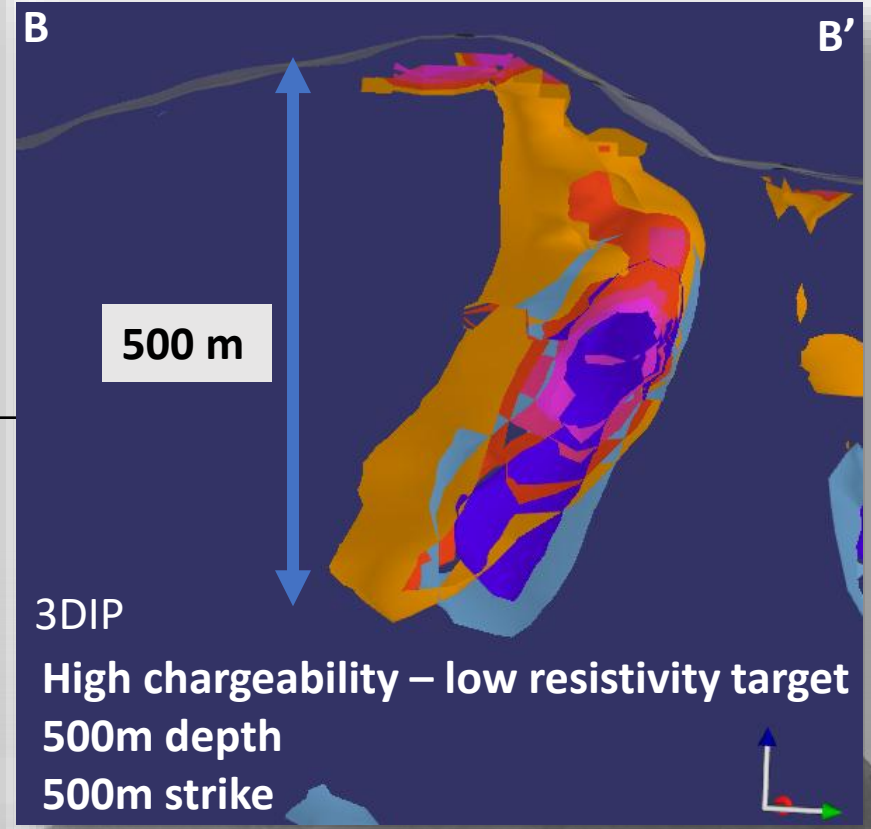
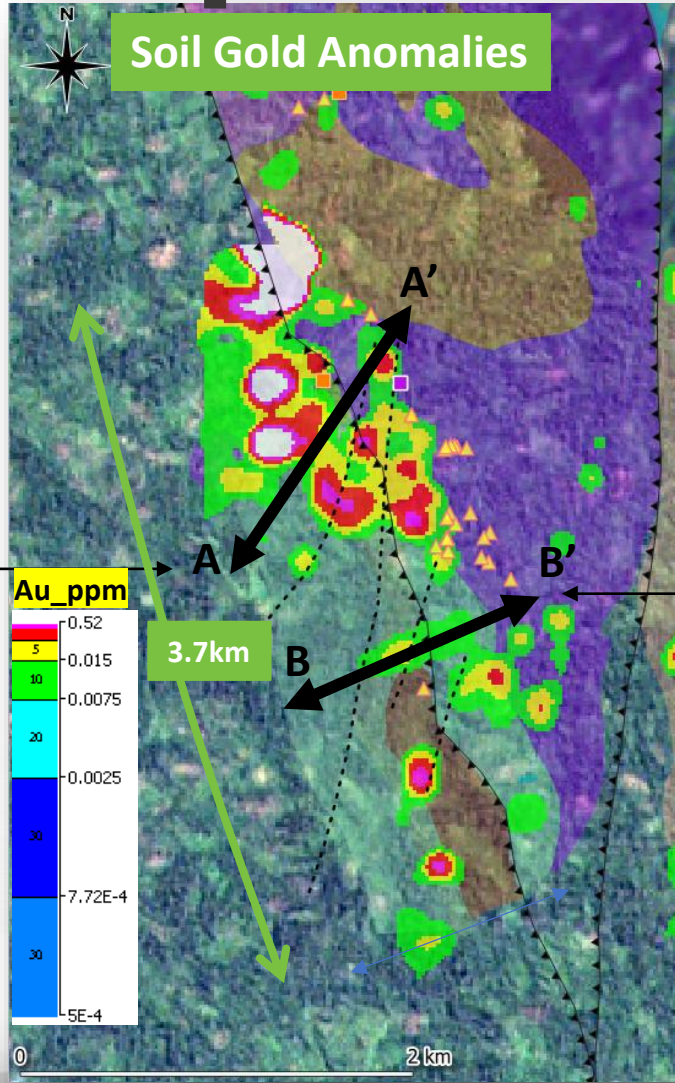
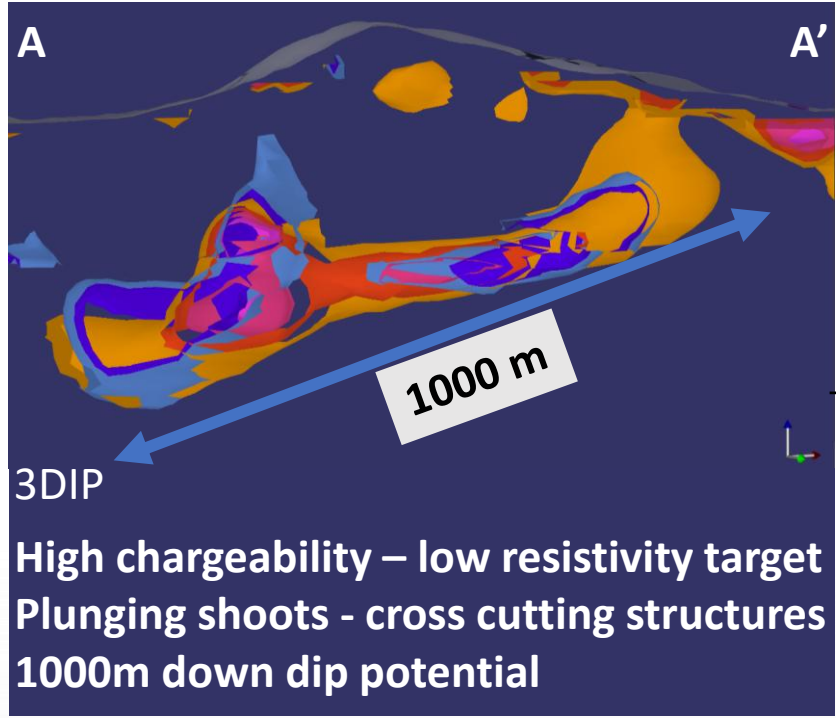


# Belen Overview – 3 targets Q2 2025 Drilling





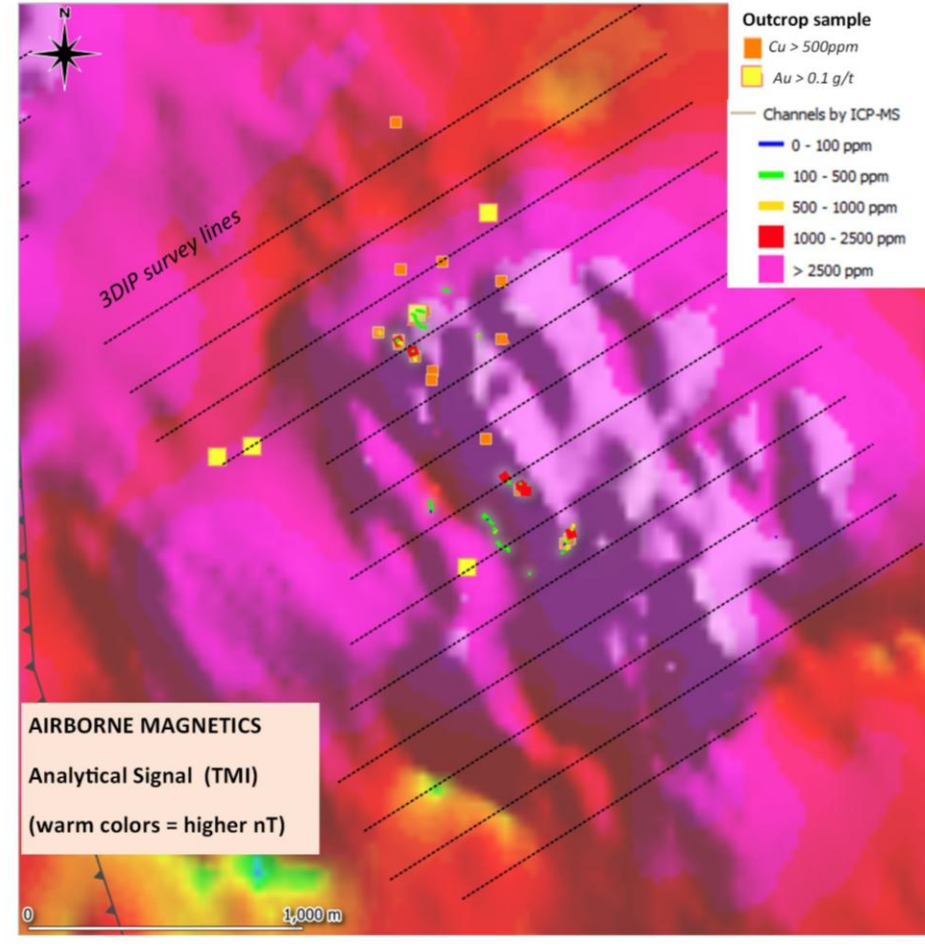
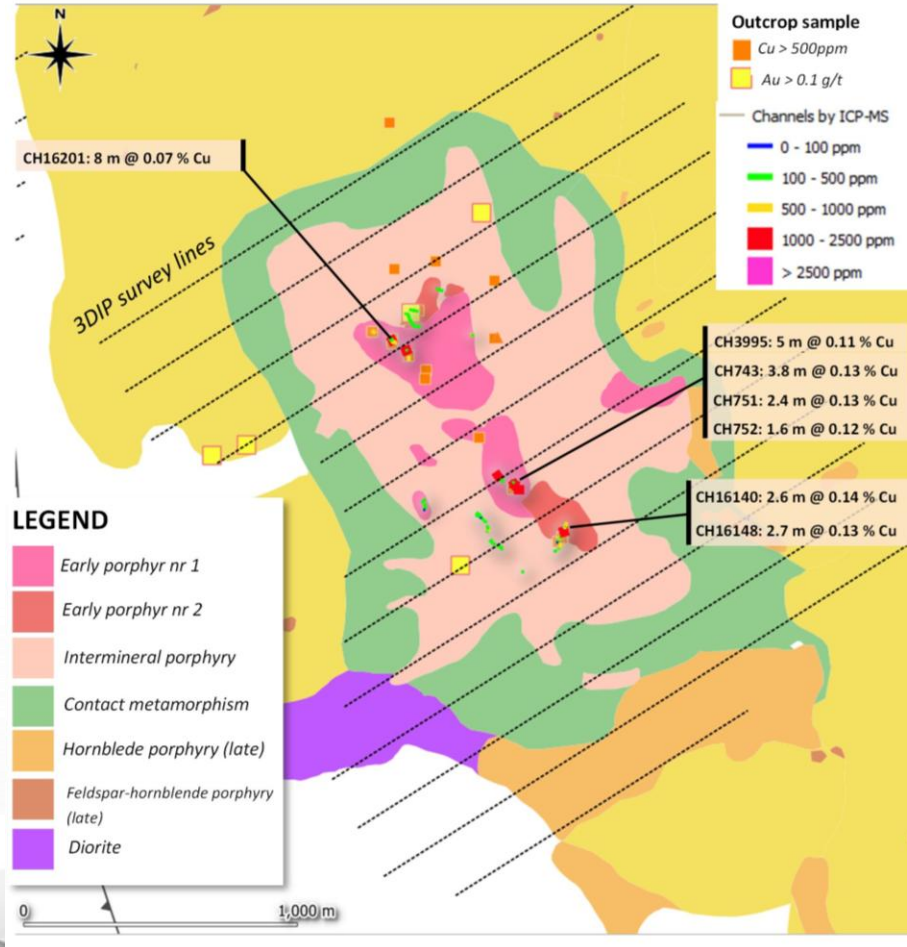
# Vista Alegre – Epithermal Gold Target





# Belen Ricardo Herrera IP Geophysics

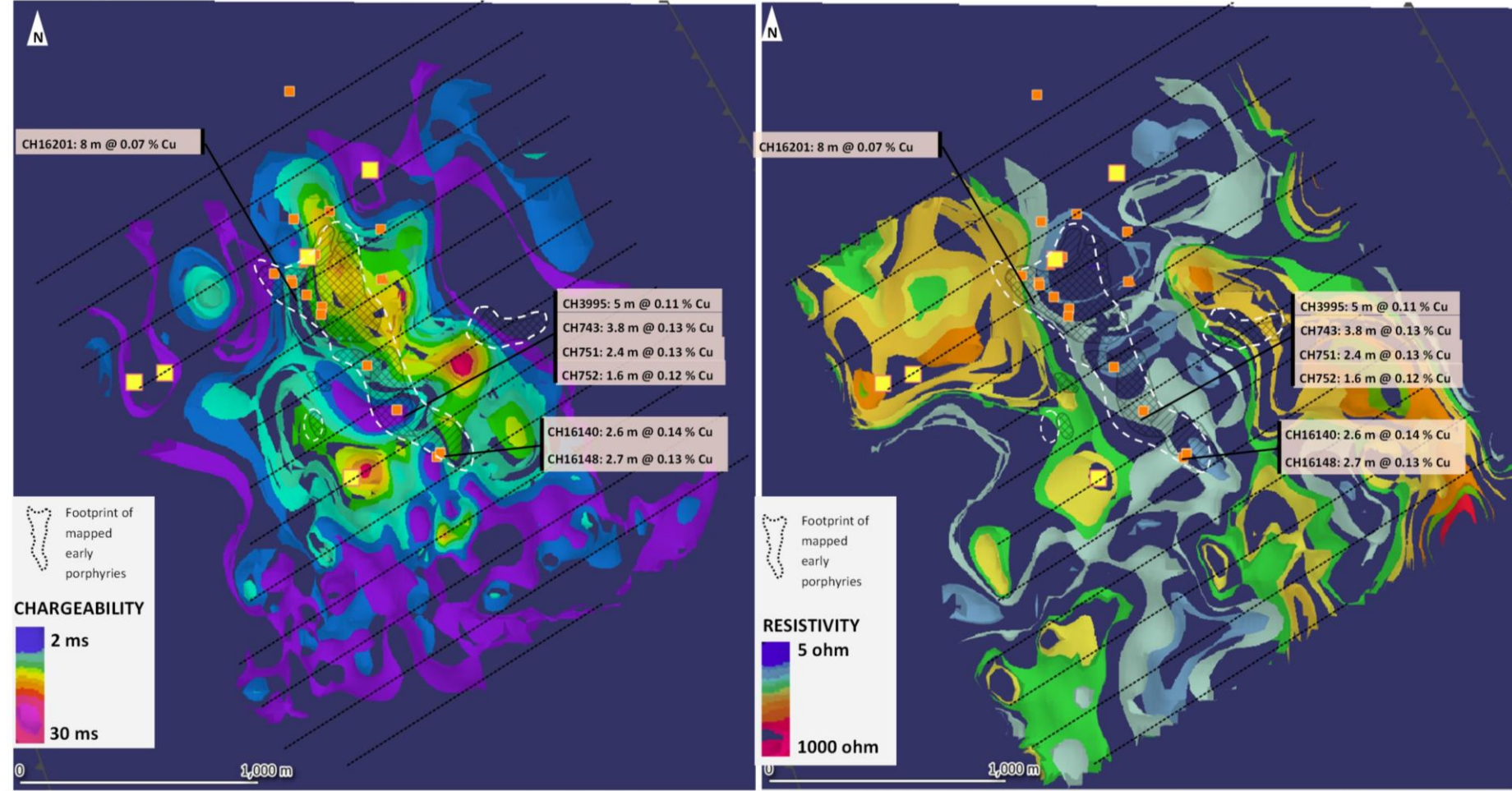
## Geology and magnetics over the Ricardo Herrera copper gold porphyry project at Valiente





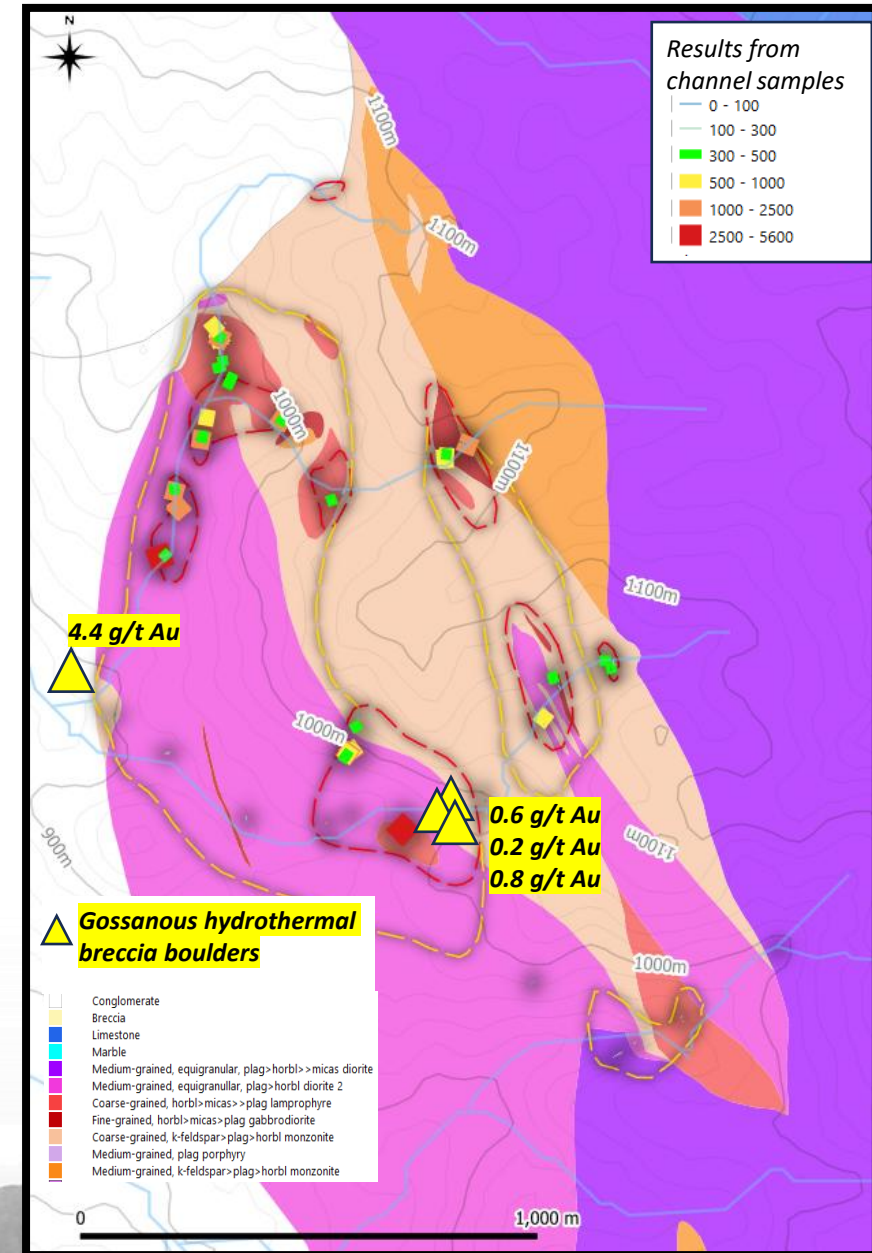
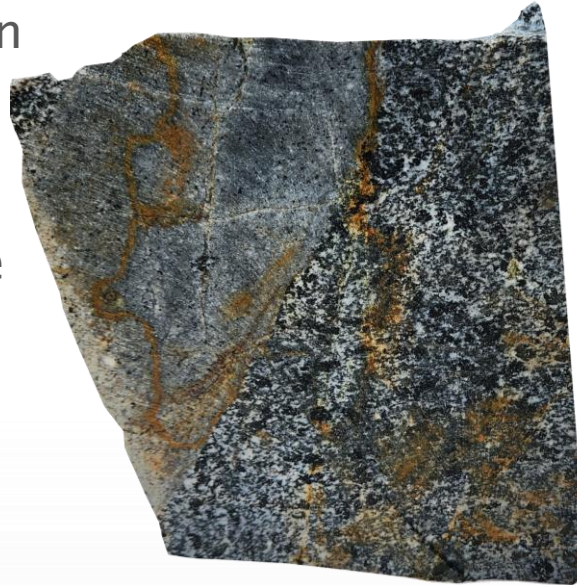
# Ricardo Herrera IP Geophysics

IP Depth slice 700mRL (c. 250m below surface)



# SORTILEGIO

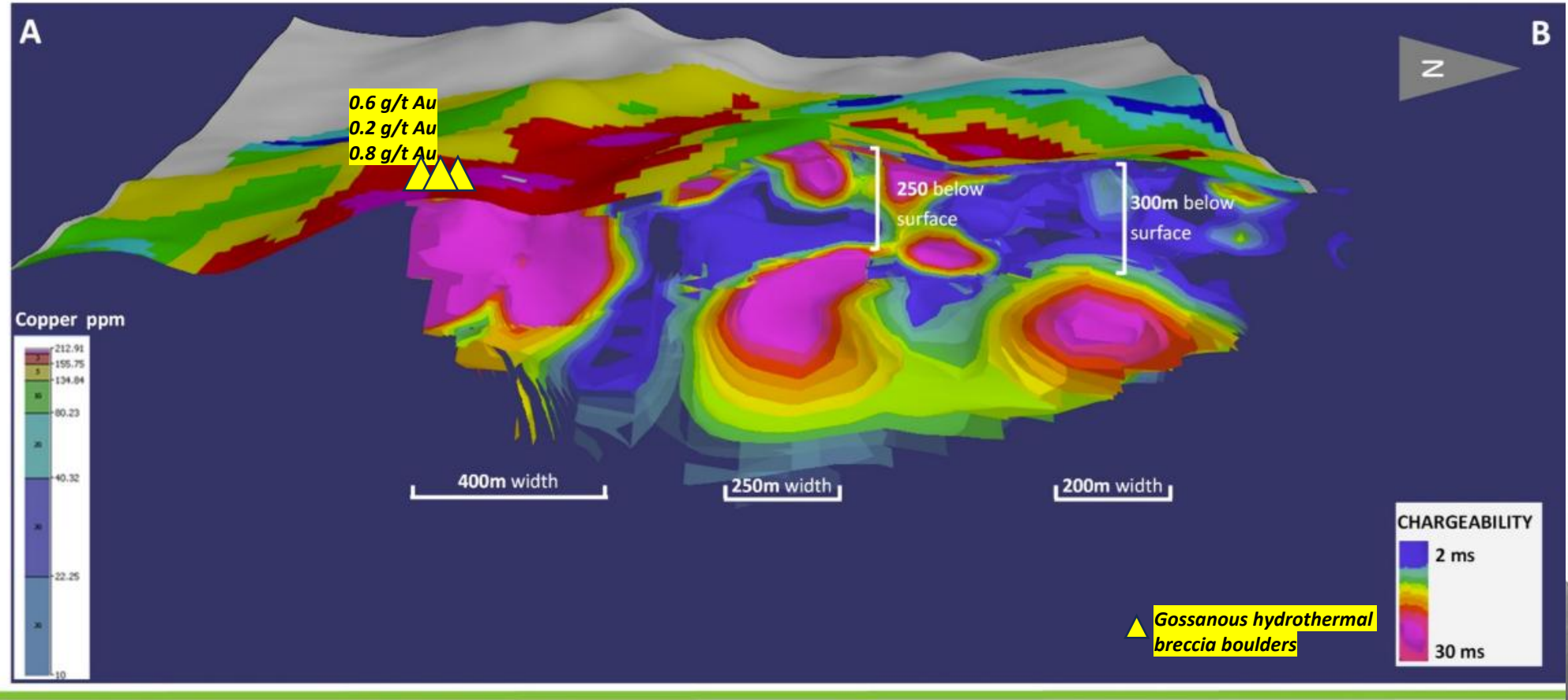
- ✓ Multistage event of intrusive rocks from basic to acid composition.
- ✓ 1.5km x 1.0 km alkalic porphyry target.
- ✓ 6 cores zones of copper mineralization in the form of stockwork of goethite-hematite veinlets were identified.
- ✓ 42 channels have been taken from the 6 zones with >20 veinlets / meter.
- ✓ Of these 38 channels have composite values of 2.54m @ 788 ppm Cu and with a maximum of 4365 ppm Cu and minimum of 258 ppm Cu with a length from 0.8m to 10m





# Sortilegio IP Geophysics

## LONGSECTION ACROSS THE 3D IP SURVEY AREA AT SORTILEGIO



# Summary

---

1. **First mover and large land position with de-risked drill ready targets**
2. **Emerging alkaline gold and copper-gold porphyry district with low hanging fruit and potential for giant discoveries**
3. **Exploration results recognized by strategic investment from Canada's largest mining company and a key joint venture agreement with the Japanese government (JOGMEC) at San Martin, Peru**
4. **Maiden drill permitting at both Valiente (Belen), Chile and San Martin projects in Peru.**
5. **Drilling anticipated in : CHILE Q2 2025/ VALIENTE Q2 2025 / SAN MARTIN Q3 2025**

# Hannan in 2025

## Q2 25 VALIENTE BELEN PERU – 100 % Hannan

DRILL PERMITTING COMPLETE  
ACTIVE TEAM EXPLORING GIANT PREVISTO CENTRAL  
ESTABLISH MULTIPLE DRILL AREAS OF COPPER-GOLD  
TARGETS OVER THE NEXT 5 YEARS

## Q3 25 - SAN MARTIN PERU JOGMEC JV

2,000m DRILL PROGRAM JV WITH JOGMEC - FULLY  
FUNDED. SEDIMENT HOSTED COPPER SILVER

## Q2 25 – CHILE – 100% Hannan

SMALL DRILL PROGRAM (120m) TO  
TEST BLIND SUPERGENE PORPHYRY  
COPPER TARGET



# HANNAN METALS

Discovery of large copper and gold mineralizing systems in new frontiers

 Hannanmetals

**TSXv: HAN**

## Contact

HANNAN METALS LTD  
INVESTOR RELATIONS (CANADA)



Mariana Bermudez  
- Corporate Secretary  
Tel: +1 (604) 685 9316  
Fax: +1 (604) 683 1585  
[info@hannanmetals.com](mailto:info@hannanmetals.com)



# Appendices





# Peru – San Martin Cu-Ag Project

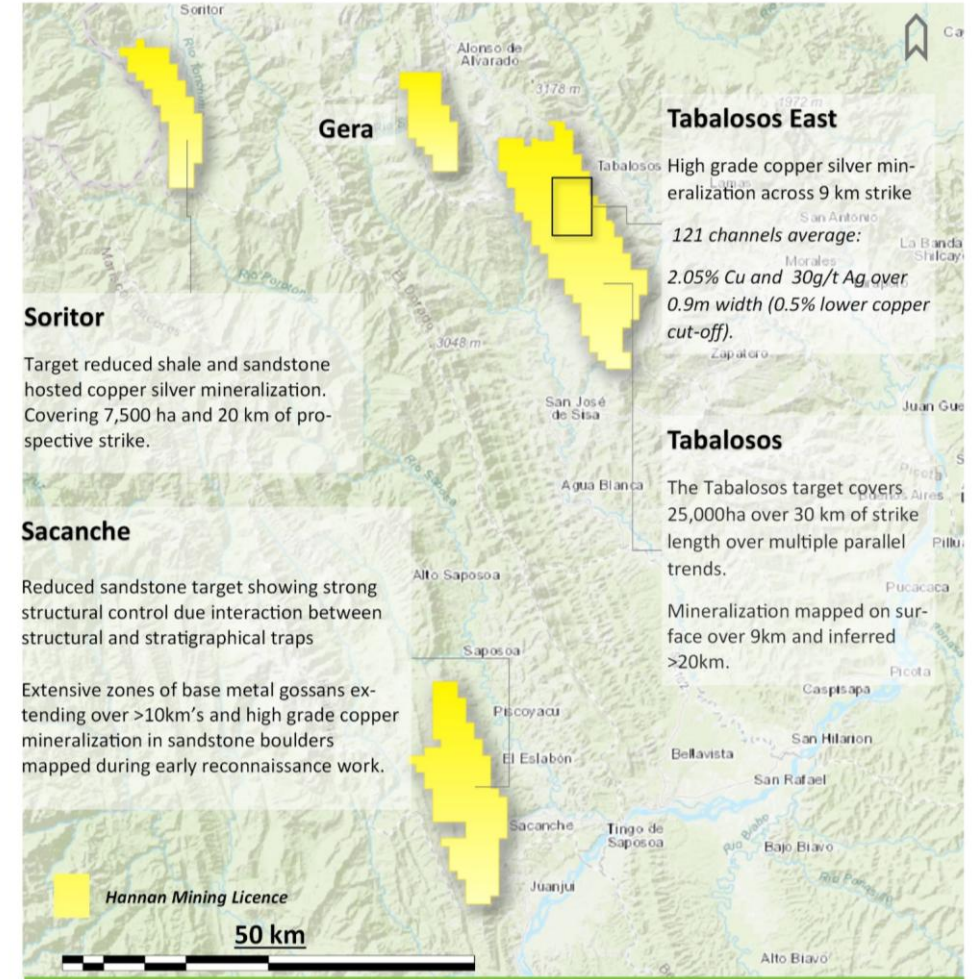
## Reduced Sandstone Target Style

Highly sought after and prospective style of sediment hosted copper mineralization discovered in San Martin

Extensive zones of base metal gossans extending over >10km's and high-grade copper mineralization in sandstone boulders

DIA Drill Permit Granted Jan 2024, drilling planned Q4 2024

New discovery at Soritor: 2.3 km of strike including 5.8 m at 3.1% copper and 65 g/t silver from surface.





# Peru – San Martin Cu-Ag Project

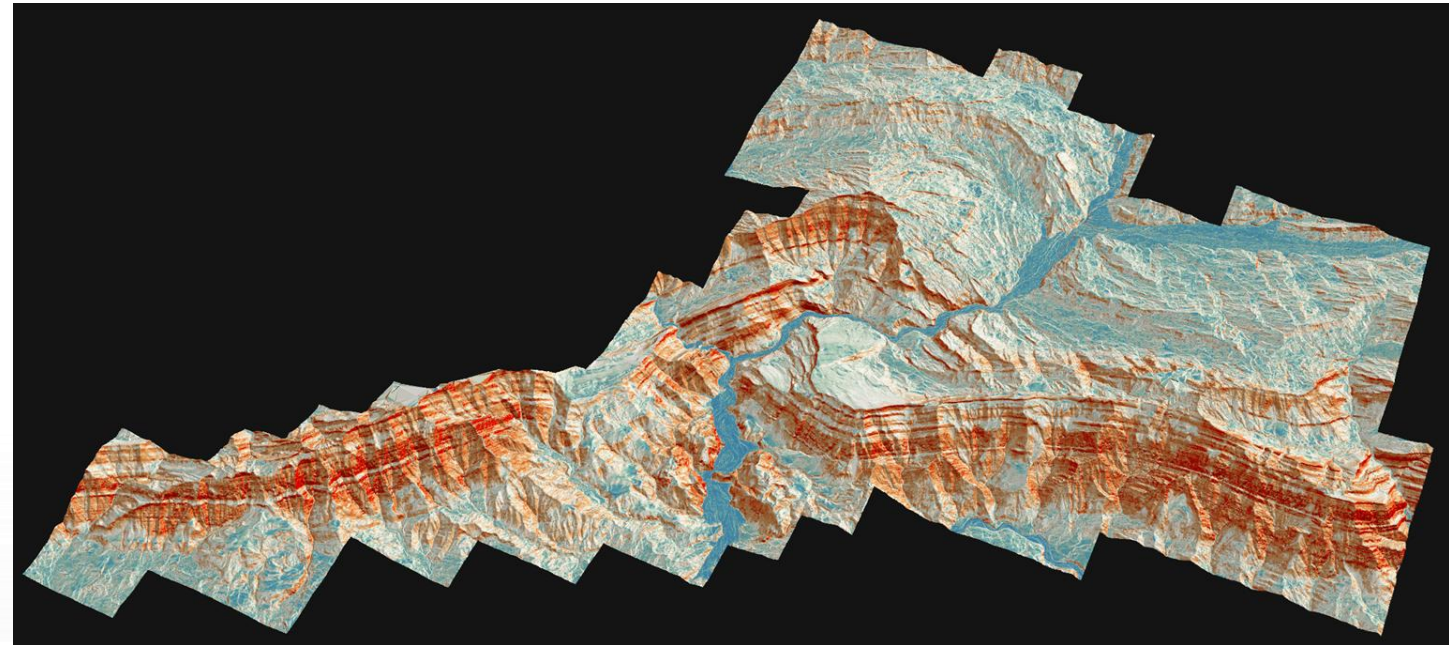
**An emerging sediment hosted copper basin**

Key geological elements for the development of giant deposits

Analogous to the Central African Copper Belt, the San Martin Project evolved as a salt rich intra-cratonic basin and was subsequently affected by compressional deformation

Two targets reduced shale and reduced sandstone target.

## HANNAN LiDAR SURVEY





# Peru – San Martin Cu-Ag Project

## Geological de-risking

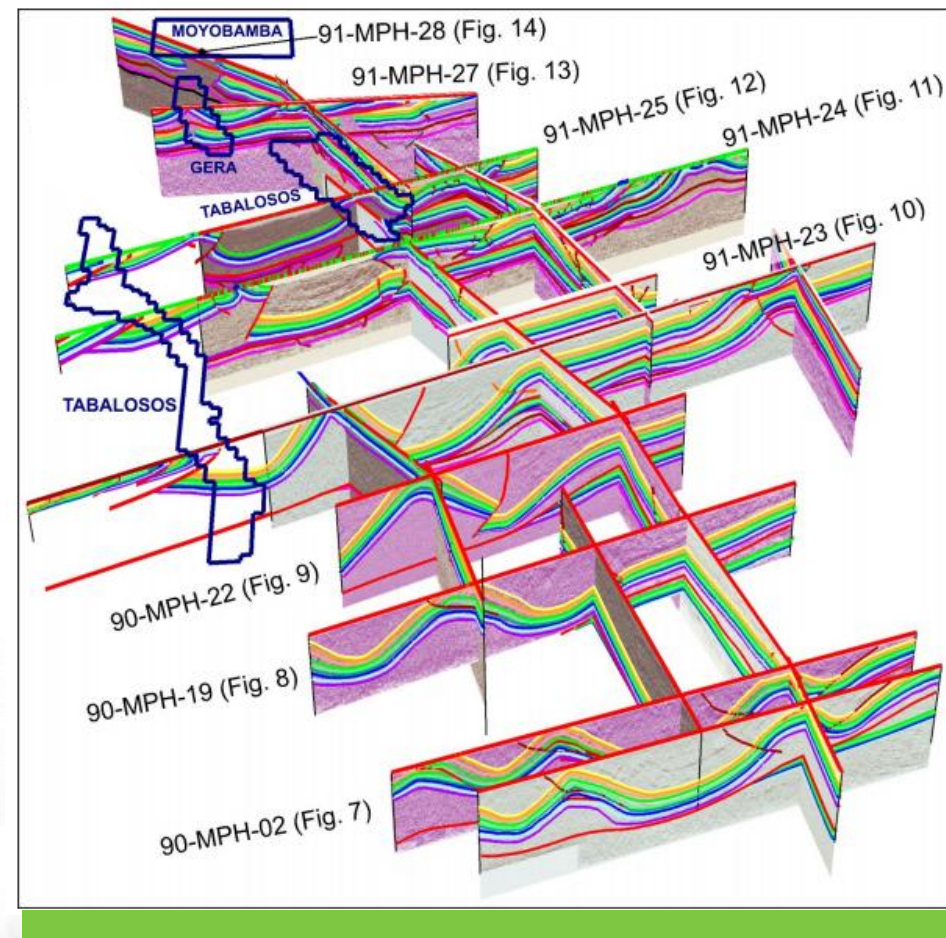
Project has been de-risking with 2D seismic to understand basin evolution and fluid pathways

LiDAR is used to map mineralization at low cost under the dense jungle canopy.

High grade copper silver mineralization across vast areas. *121 channels average:*

**2.05% Cu and 30g/t Ag**  
**over 0.9m width**

*(0.5% lower copper cut-off)*



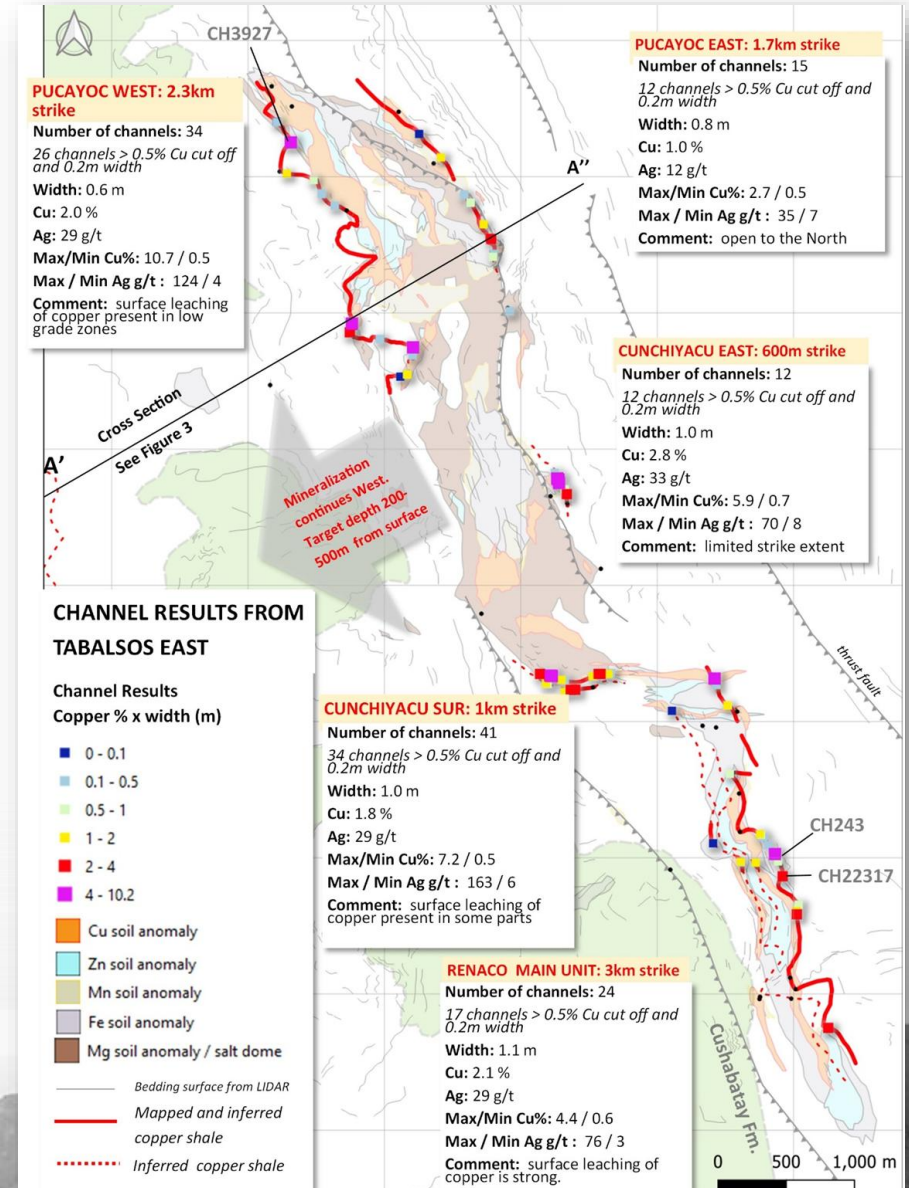
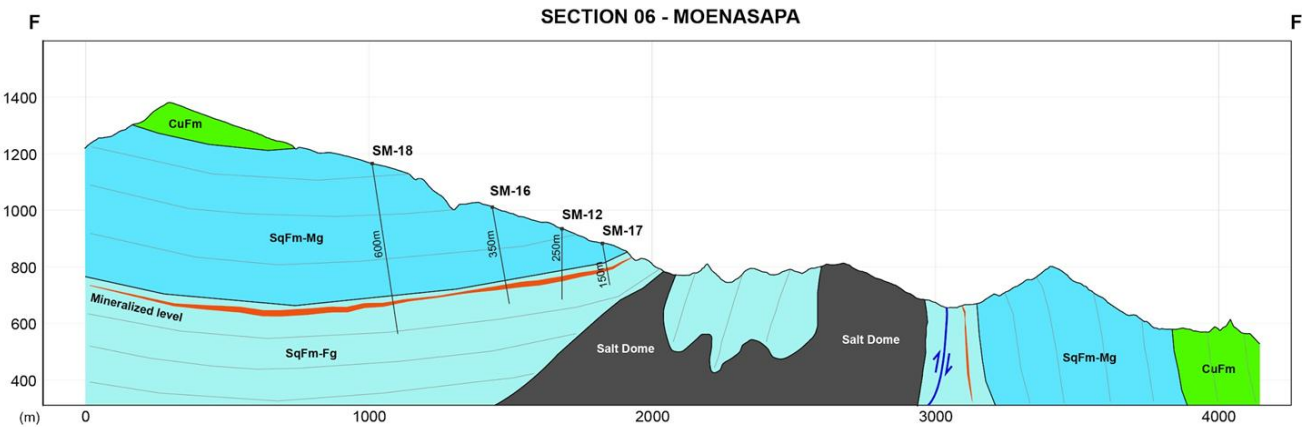


# Peru – San Martin

## Drill Program 2024 – Q2

2000m drill program – fully funded by JOGMEC

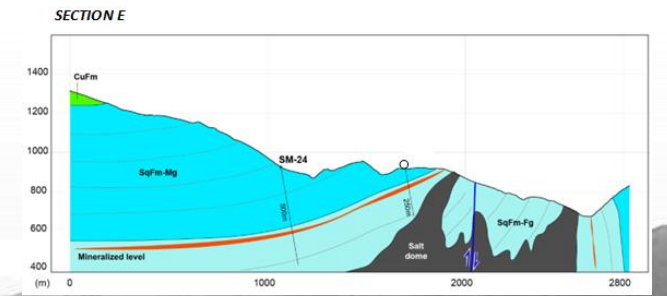
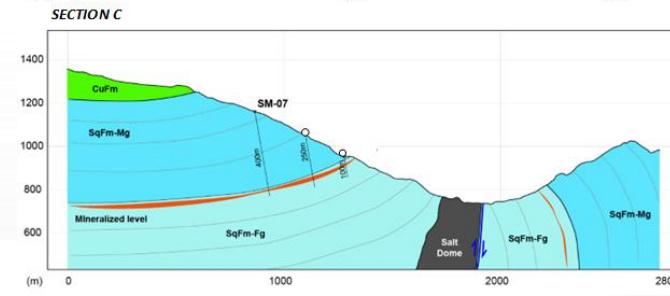
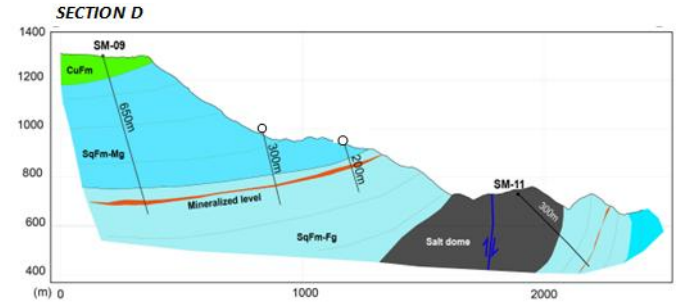
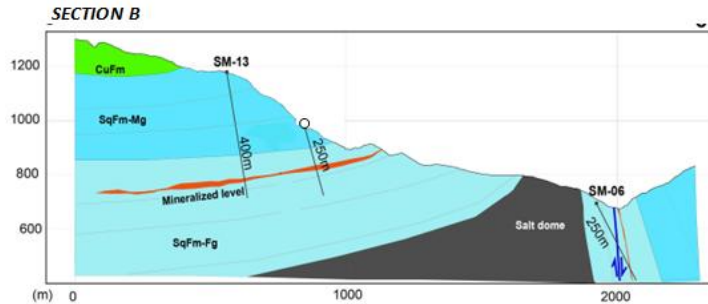
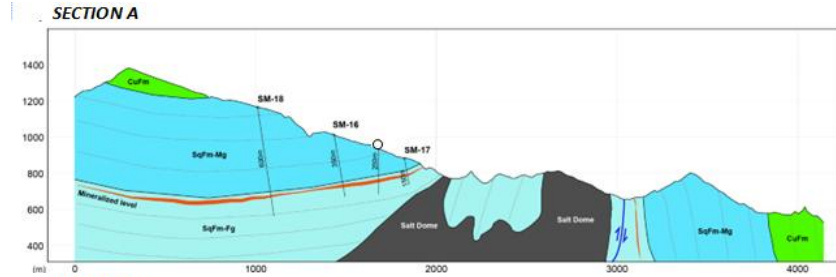
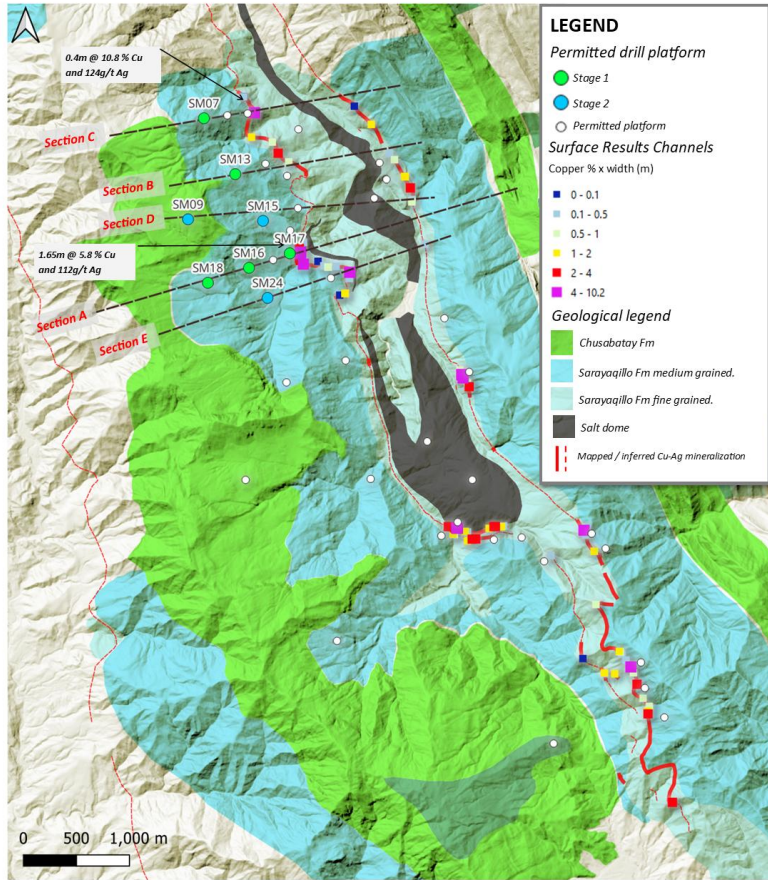
Outcropping high grade copper mineralization over 7 km of strike and down to a vertical depth of at least 500 meters





# Peru – San Martin

## Planned Drill Program

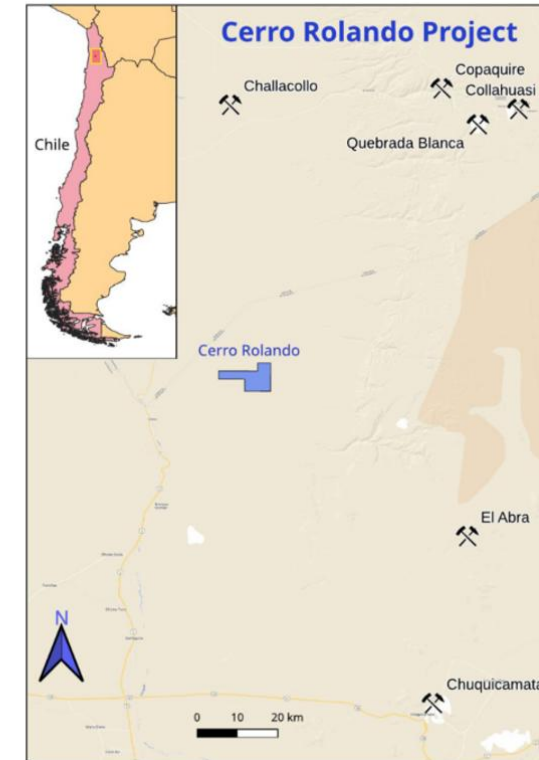
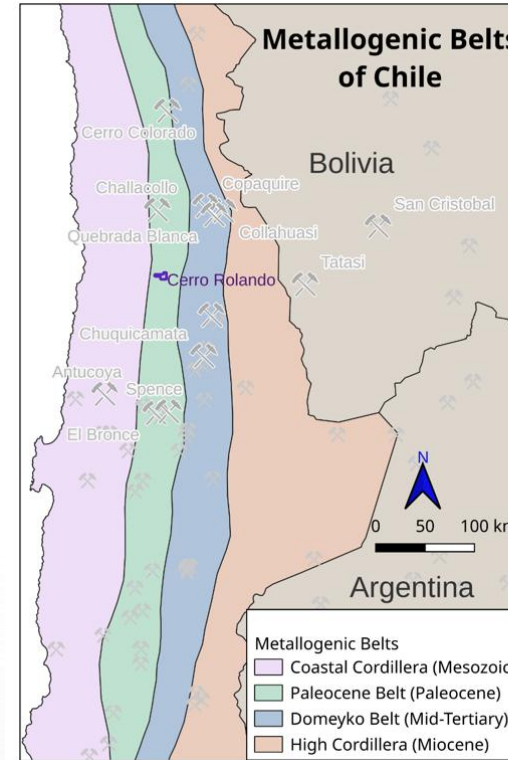




# Chile – the Cerro Rolando Porphyry Project

Grass root opportunity in worlds premier copper province

- Letter of Agreement to acquire 100% interest in the Cerro Rolando Copper porphyry project.
- Located in the Palaeocene metallogenic belt of Chile
- Airborne EM data models a conductor at the base of 200-metre-thick cover over 1.2 km of strike.
- The conductor is interpreted to be a potential chalcocite enrichment blanket lying above a modelled magnetic body, interpreted to be the potassic core of a copper-bearing porphyry







# Chile – the Cerro Rolando Porphyry Project

Grass root opportunity in worlds premier copper province

Completed initial geophysical surveys in 2023 (MAG EM LOOP)

Complex geological conditions but results supports perched sulphide /supergene mineralization within a leached cap.

The EM conductor is coinciding with a strong magnetic anomaly modelled at +450m depth.

Small 120m drill program in Q2 2025 to test model

