



# Hannanmetals

## COPPER | SILVER | GOLD PERU

***DEFINING LARGE MINERALIZING SYSTEMS  
IN PERU'S NEW FRONTIER AREAS***

Corporate Presentation  
October 2022



Hannanmetals

TSXV : HAN

OTC: HANNF

# Disclaimer

**Accuracy of Information:** Readers are directed to the public disclosure of Hannan Metals Limited (“Hannan”) available under Hannan’s profile on the System for Electronic Document Analysis and Retrieval (“SEDAR”) at [www.sedar.com](http://www.sedar.com). Information contained in this presentation was believed to be accurate at the time it was posted, but may be superseded by more recent public disclosure of Hannan. Hannan makes no representations or warranties as to the accuracy, reliability, completeness or timeliness of the information in this presentation.

**Forward-Looking Information:** Some of the statements contained in this presentation may be forward-looking statements or forward-looking information within the meaning of applicable securities laws (collectively, “forward-looking statements”). All statements herein, other than statements of historical fact, are forward-looking statements. Although Hannan believes that such statements are reasonable, it can give no assurance that such expectations will prove to be correct. Forward-looking statements are typically identified by words such as: believe, expect, anticipate, intend, estimate, postulate, and similar expressions, or are those, which, by their nature, refer to future events. Hannan cautions investors that any forward-looking statements are not guarantees of future results or performance, and that actual results may differ materially from those in forward-looking statements as a result of various factors, including, but not limited to, capital and other costs varying significantly from estimates, changes in world metal markets, changes in equity markets, planned drill programs and results varying from expectations, delays in obtaining results, equipment failure, unexpected geological conditions, local community relations, dealings with non-governmental organizations, delays in operations due to permit grants, environmental and safety risks, and other risks and uncertainties. Any forward-looking statement speaks only as of the date on which it is made and, except as may be required by applicable securities laws, Hannan does not assume the obligation to revise or update forward-looking statements or information that may be contained in this presentation or to revise them to reflect the occurrence of future unanticipated events.

**Qualified Person:** The qualified person for Hannan’s projects, Michael Hudson, CEO for Hannan, and a Fellow of the Australasian Institute of Mining and Metallurgy, has reviewed and verified the contents of this presentation.



## Why HAN:TSXV?

1. **First mover - Secured “big company” land position:**
  - San Martin sediment-hosted copper-silver
  - Valiente porphyry copper-gold
2. **Top 10 Peru tenure holder**
3. **Japanese Government Joint Venture (JOGMEC)**
  - **US\$35M - 1/3 of ground position at San Martin**
  - **Teck 9% equity**
4. **Team of discoverers and value creators**

# Capital Structure



OTC Pink

INSIDERS:

SHARES ON ISSUE:

FULLY DILUTED:

RECENT PRICE:

MARKET CAP:

CASH:

ENTERPRISE VALUE:

HAN

HANNF

14%

102.0 M

106.8 M

C\$0.29 (05 Oct 22)

C\$29.6 M

C\$3.5 M

C\$26.0 M



Stock Options	Price	No. of Securities
Expiring January 23, 2023	\$0.25	3,295,000
Exp ring May 28, 2023	\$0.28	100,000
Expiring July 21, 2023	\$0.44	250,000
Expiring August 11, 2023	\$0.455	250,000
Expiring September 4, 2023	\$0.13	250,000
Expiring October 8, 2023	\$0.365	100,000
Expiring December 2, 2023	\$0.435	100,000
Expiring June 14, 2024	\$0.285	275,000
Expiring October 4, 2024	\$0.285	30,000
Expiring December 3, 2024	\$0.235	120,000

# Directors & Officers



**Michael Hudson (Chairman & CEO):** *B.Sc. (Hons), GDipAppFin, FAusIMM, MAIG*



**Lars Dahlenborg (President):** *MSC, MAIG*



**David Henstridge (Director):** *B.Sc. (Hons), FAusIMM, MAIG, MGSAust*



**Georgina Carnegie (Director):** *B.Com, AM Harvard*



**Ciara Talbot (Director):** *B.Sc. (Honours)*



**Nick DeMare (Director):** *CPA, CA*



**Mariana Bermudez (Corporate Secretary)**

Hannan is managed by a group with careers built in the exploration industry.

In recent years, the group has raised more than US\$100M for European and Peruvian exploration and development.

Hannan management is highly experienced with a long history of working in Peru.



# SOCIAL MANAGEMENT ESG

*Genuinely  
Mission Critical*



# Peru Top 10 Tenure Holder



***Big company land position:***

***2,093 sq km***

***The top ten Peruvian tenure holders average US\$50B market capitalization and combined hold 18.0% of the tenure held in Peru***



Top ranked Peruvian tenure holders at the end of April 2021, considering granted mining concession and application. The table highlights ranked area under tenure and market capitalization. Source: <https://geocatmin.ingemmet.gob.pe/geocatmin/>

# Hannan in Peru

## ***SAN MARTIN***

- Sediment Hosted Copper-Silver
- Opportunity to discover a new sediment hosted copper basin

## ***VALIENTE***

- Discovered a new Miocene age porphyry copper-gold belt





# San Martin – Cu-Ag Sediment Hosted

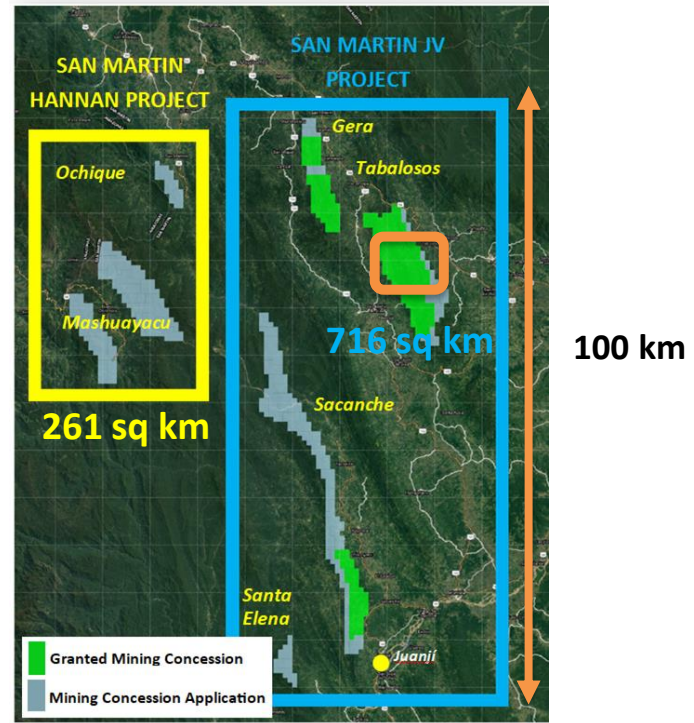
- ✓ Kupferschiefer in Poland analogue
  - ✓ No. 1 global silver producer
  - ✓ No. 7 global copper producer
- ✓ Widths and grade at San Martin (**0.9 metre @ 1.9 % copper and 27 g/t silver**) from 105 channels within 8 km by 1 km
  - ✓ Compares with drill discovery of the Kupferschiefer

In 1957 the discovery drillhole intersected 2.0 metres @ 1.5% copper at 657 metres depth



# San Martin Sediment Hosted Copper-Silver

- ✓ 716 sq km – JOGMEC JV option to earn 75% by spending US\$35,000,000
- ✓ 261 sq km - 100% HAN
- ✓ Basin wide mineralizing process – “pancake”
- ✓ High grade Cu-Ag mineralization



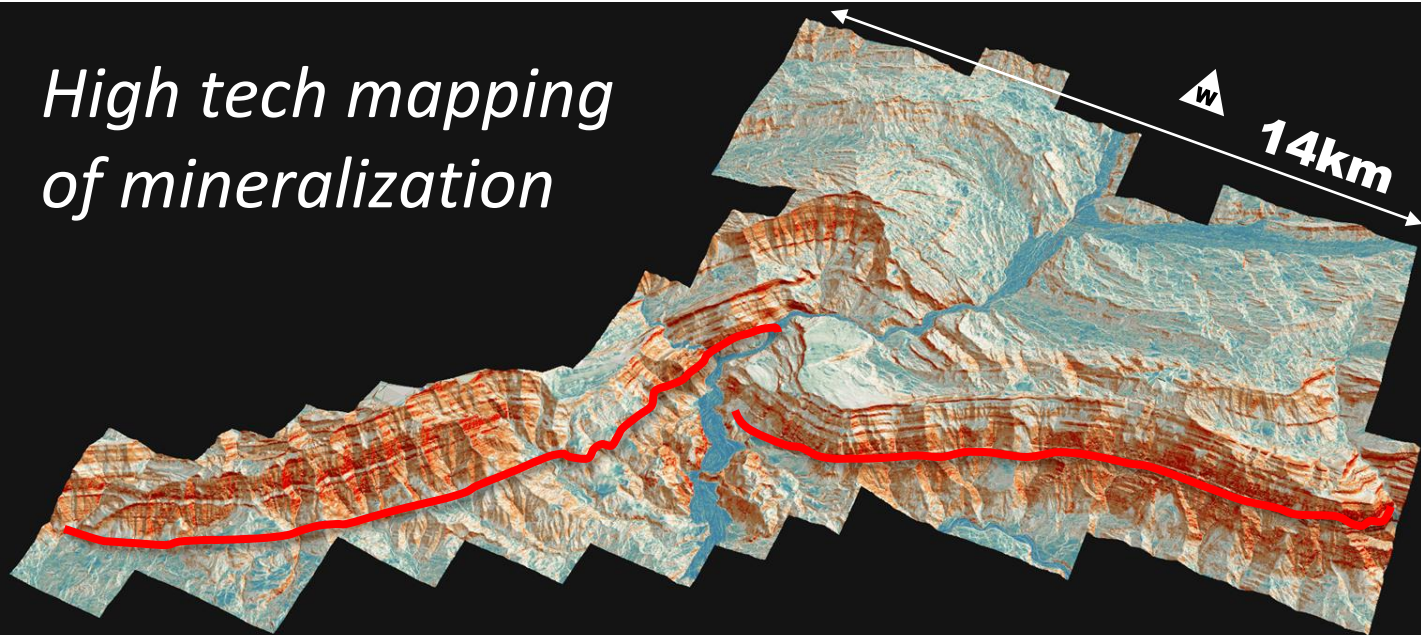
# Exploration Methodologies



- ✓ Boulders in creeks, stream sediment sampling
- ✓ Systematic soil survey tracking the Cu-Ag shale under the thin overburden. Less than <1% of the bedrock is estimated to outcrop.
- ✓ Mobile analytical technology (multiple pXRFs)
- ✓ 105 channel samples, mapping
- ✓ LiDAR – US\$500K

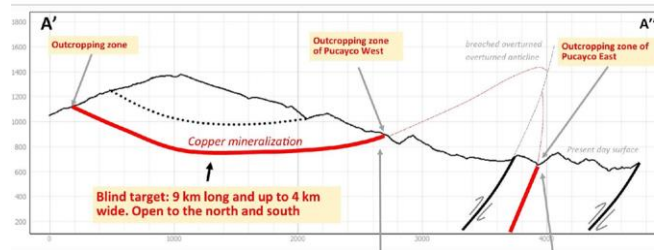
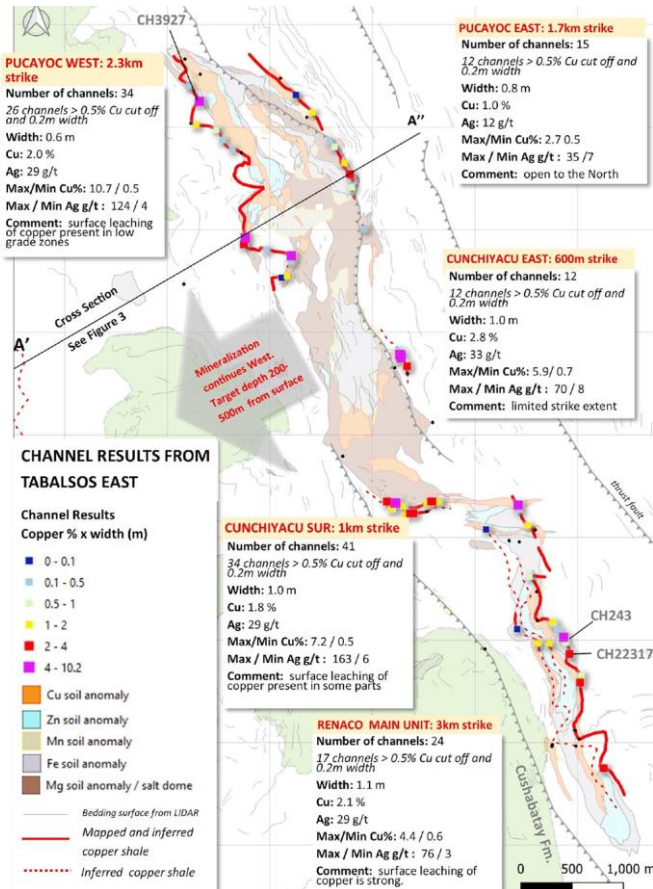
# LiDAR – Machine Learning

*High tech mapping  
of mineralization*





# TABALOSOS CHANNEL SAMPLING



4% of tenure

✓ Drilling – permitting submitted (archaeological, environmental, social), waiting....Q4 22/Q1 23

# Hannan in Peru

## ***SAN MARTIN***

- Sediment Hosted Copper-Silver
- New sediment-hosted copper basin

## ***VALIENTE***

- Miocene age porphyry copper-gold belt discovery



# Valiente

- ✓ Staked 950 sq km back-arc Miocene age porphyry copper-gold systems in central Peru
- ✓ Emergence of a major new copper-gold mineral camp discovery
  - ✓ 7 mineralized intrusive centers
- ✓ Belen may only represent the first discovery from a series of similar targets within the regional Valiente project
- ✓ Never drilled



# Project overview / target areas

## **PREVISTO:**

- 3 intrusive centers
- Gold, copper, molybdenum in intrusive boulders.
- Completed 3 campaigns of reconnaissance work.

## **DIVISORIA:**

- Strong magnetic anomalies and intrusive centers from remote mapping.
- Samples with "high" prospective profile using Sr/Y ratios
- 1-2 days traverses passing the area. No boulders or anomalous BLE

## **FLOR DE CAFE:**

- Distinct magnetic anomaly + intrusive centers from remote mapping with concentric faults
- "V" anomaly in BLEG

## **BELEN:**

- Our key target area and focus of 90% of all work to date.  
Key areas include:
- Ricardo Herrera porphyry target
- Vista Alegre epithermal target
- Sortilegio porphyry target

## **SERRANO NORTE**

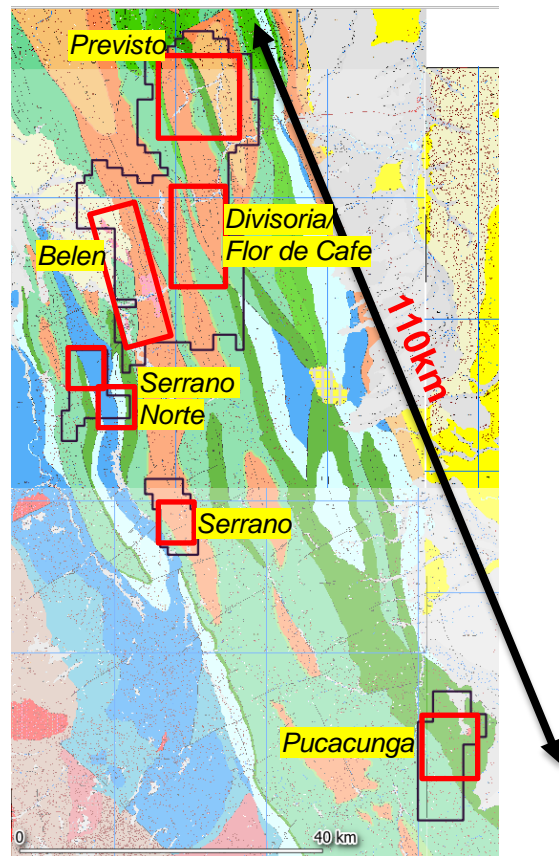
- Distinct intrusive centers from remote mapping coupled with magnetic anomalies.

## **SERRANO**

- BLEG and regional magnetic anomalies.

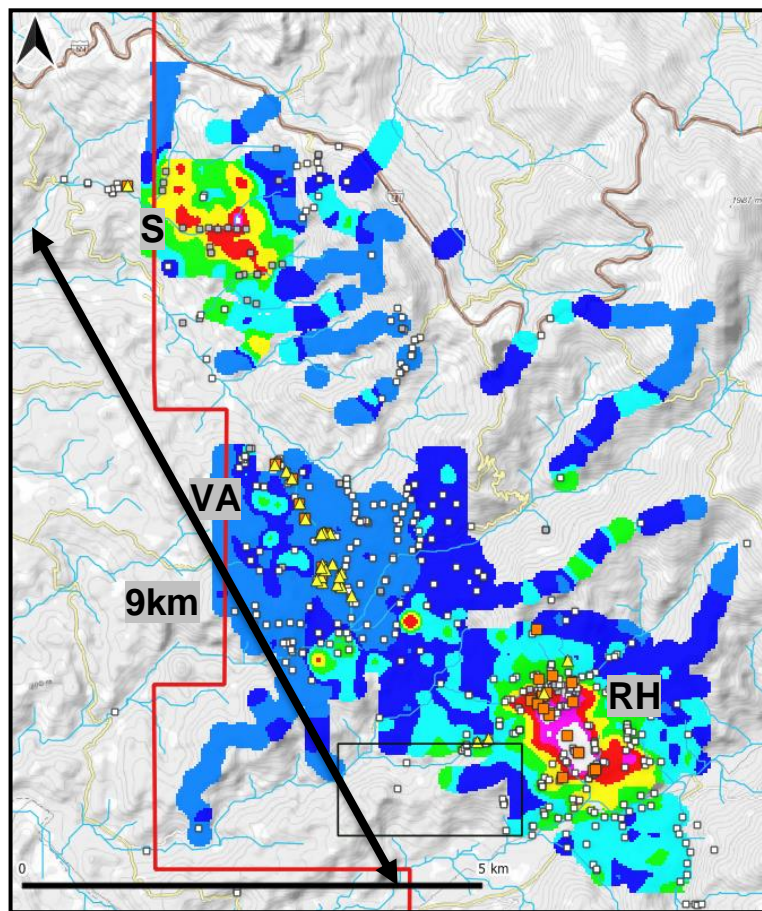
## **PUCACUNGA**

- Strong BLEG and distinct regional magnetic anomaly + boulders in creeks





# ROCKS SAMPLES AND Cu SOIL GRID



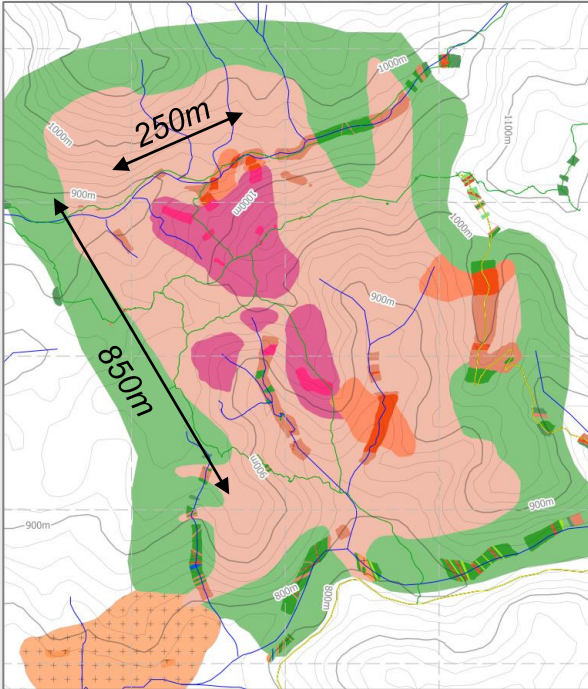
- Results of rocks samples show a big system with trend NW to SE
- Cu anomaly to south east (Herrera)
- Au anomaly for rock samples in the middle (Vista Alegre)
- Potential área to explore in Sortilegio with similar results to Ricardo Herrera

- **S=Sortilegio**
- **VA= Vista Alegre**
- **RH= Ricardo Herrera**

✓	✗	Rocks by ICPMS Cu ppm y FA Au
✓	□	0 - 500
✓	△	Au over 0.1ppm
✓	■	Cu over 500 ppm
✓	□	No Results

# BELEN ZONE – TARGET 1

Ricardo Herrera / San Pablo  
Miocene intrusion (15.4Ma)



## Quartz Diorite

- Fine to medium grained texture intensely altered to a mass of silica-sericite (grey-greenish)
- Intermediate argillic (cl-ser), potassic alteration relicts (secondary biotite-magnetite).
- “EB” type veinlets -> chlorite in association with py-magnetite-> “M” type veinlets.
- Phyllic (qz-be)
- Few type “A” veinlets.
- Disseminated py >5%
- Pyrite-chalcopryrite-chalcocite-molybdenite-neotocyt mineralization.

# BELEN ZONE – TARGET 2 Vista Alegre

Two Au trends in  
soil data: 2.5km  
strike

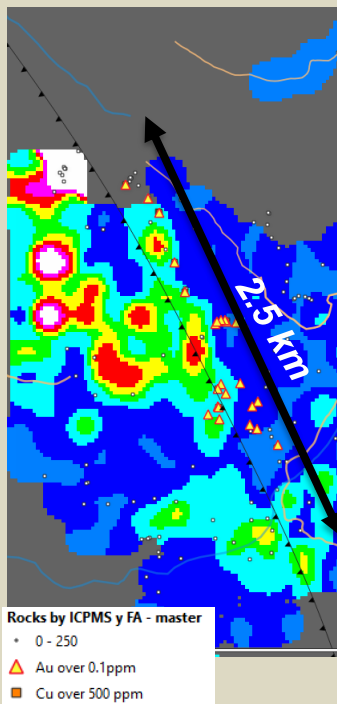
*Open along strike*

*Large gold bearing  
(1m<sup>3</sup>) qz-py(cpy)  
boulders*

*Unexplained gossan  
boulders*

*Up to 1.2 ppm Au in  
soil (b/c-horizon)*

Au bearing boulder samples up to 2.8 ppm Au



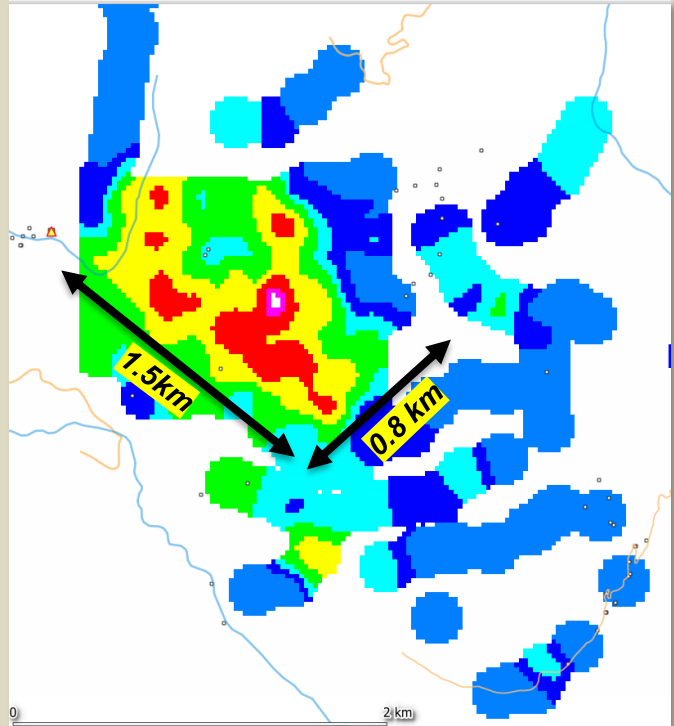
# BELEN ZONE – TARGET 3 Sortilegio

**New discovery 6 km  
North of Ricardo Herrera**

*Coinciding copper soil anomaly  
and magnetic high.*

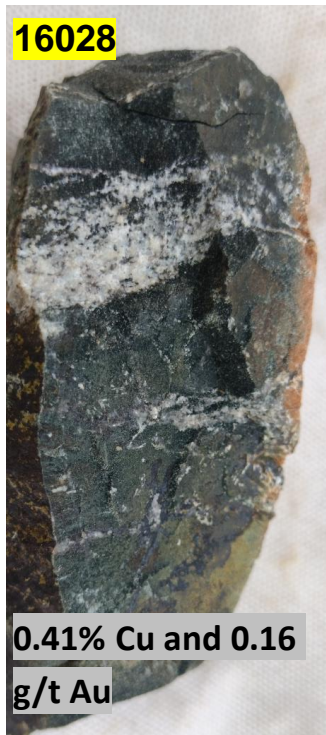
*Potassic Cu-Au mineralized  
boulders in creeks:  
0.41 % Cu and 0.16 ppm Au*

*Mapping and channel sampling  
is starting in October*





# BELEN ZONE – TARGET 3















*Strong  
potassic  
alteration with  
copper and  
gold  
mineralization*




# PREVISTO

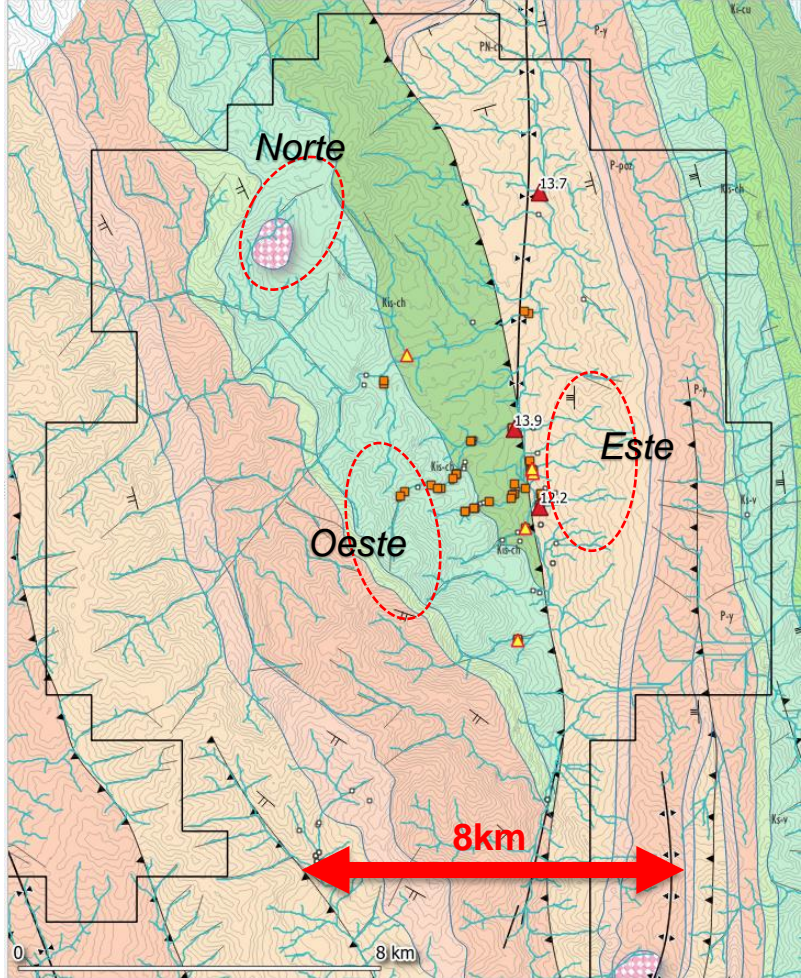
Strong evidence for three separate Miocene age intrusions in a 10x5km area.

Intruding Cretaceous limestone and Pleistocene tuffaceous sandstone

## Lithostrucutral interpretation

-  intrusive (Pp-di)
-  salt dome (N-dmsal)
-  Huayabamba Gp Chambira Fmn - sandstone grey/brown (PN-ch)
-  Huayabamba Gp Pozo Fmn - tuffaceous sandstone/siltstone (P-poz)
-  Huayabamba Gp Yahuarango Fmn - sandstone reddish brown (P-y)
-  Vivian Fmn - quartz sandstone (Ks-v)
-  Chonta Fmn - micritic and bioclastic limestone (Kis-ch)
-  Oriente Gp Agua Caliente Fmn - quartz sandstone white/light gray (Ki-ac)
-  Oriente Gp Cushabatay Fmn - quartz sandstone white/yellow (Ki-cu)
-  Oriente Gp - undefined (Ki-o)
-  Sarayaquillo Fmn siltstones gray with coal (Js-s)
-  Pucara Gp dolomitic limestone (TsJi-p)

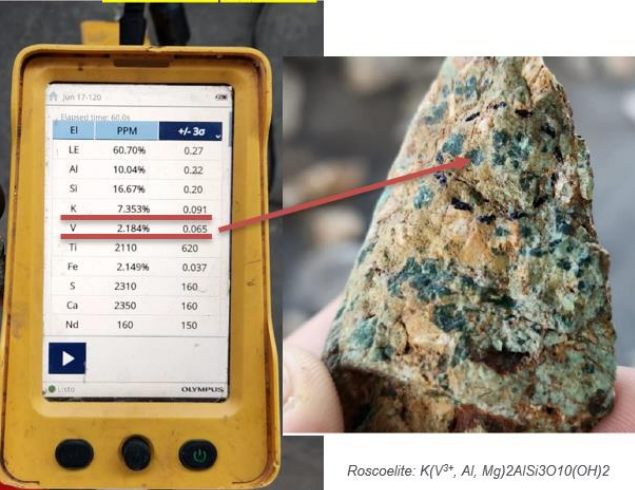
-  U-Pb sample
-  Au >0.1 ppm
-  Cu >500 ppm



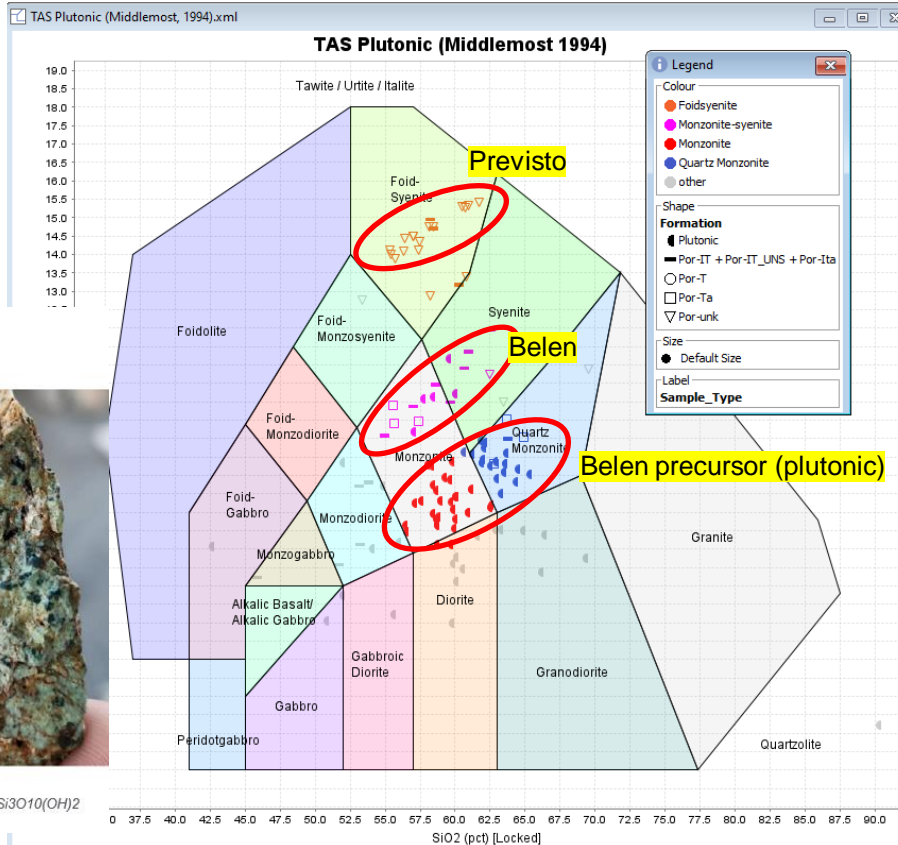
# PREVISTO

*Litho-geochemistry clearly distinguish this target from the Belen zone with a strong alkalic composition of the porphyry stocks.*

Previsto hand sample – Roscoelite

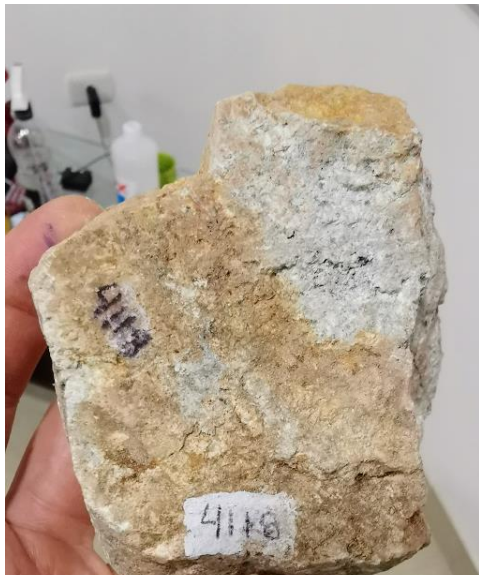


Roscoelite:  $K(V^{2+}, Al, Mg)_2AlSi_3O_{10}(OH)_2$





# Previsto Este



Supergene mineralization?  
Boulder with phyllic alteration  
and 1.4% Cu in covellite.  
In this area a small float  
assayed 25.6% Cu



Breccia boulder with 0.9 g/Au  
and >100 g/t Mo



# Budget and Work Plan 2022



## **SAN MARTIN – JOGMEC JV CDN\$2M**

- 2022: Build basin scale project, determine continuity at varying scales
- Drill Tabalosos East 2022/23 to test continuity of mineralization at various scales

## **Valiente – 100 % HANNAN CDN\$2M**

- Active field program of 4-6 geologists: Prospecting, mapping, soil sampling, trenching
- Social permitting and stakeholder management
- Regional Aeromagnetics
- First DIA commences Q3

# Contact Us



HANNAN METALS LTD  
INVESTOR RELATIONS (CANADA)



Mariana Bermudez  
- Corporate Secretary  
Tel: +1 (604) 685 9316  
Fax: +1 (604) 683 1585  
[info@hannanmetals.com](mailto:info@hannanmetals.com)