

Hannanmetals

TSXV:HAN
OTCPINK:HANNF

*...turning zinc
experience
into success at the
district-scale, high
grade, Kilbricken
discovery in
Ireland....*

Accuracy of Information: Readers are directed to the public disclosure of Hannan Metals Limited (“Hannan”) available under Hannan’s profile on the System for Electronic Document Analysis and Retrieval (“SEDAR”) at www.sedar.com. Information contained in this presentation was believed to be accurate at the time it was posted, but may be superseded by more recent public disclosure of Hannan. Hannan makes no representations or warranties as to the accuracy, reliability, completeness or timeliness of the information in this presentation.

Forward-Looking Information: Some of the statements contained in this presentation may be forward-looking statements or forward-looking information within the meaning of applicable securities laws (collectively, "forward-looking statements"). All statements herein, other than statements of historical fact, are forward-looking statements. Although Hannan believes that such statements are reasonable, it can give no assurance that such expectations will prove to be correct. Forward-looking statements are typically identified by words such as: believe, expect, anticipate, intend, estimate, postulate, and similar expressions, or are those, which, by their nature, refer to future events. Hannan cautions investors that any forward-looking statements are not guarantees of future results or performance, and that actual results may differ materially from those in forward-looking statements as a result of various factors, including, but not limited to, capital and other costs varying significantly from estimates, changes in world metal markets, changes in equity markets, planned drill programs and results varying from expectations, delays in obtaining results, equipment failure, unexpected geological conditions, local community relations, dealings with non-governmental organizations, delays in operations due to permit grants, environmental and safety risks, and other risks and uncertainties disclosed under the heading "Risk Factors" in Hannan’s most recent Annual Information Form filed on www.sedar.com. Any forward-looking statement speaks only as of the date on which it is made and, except as may be required by applicable securities laws, Hannan does not assume the obligation to revise or update forward-looking statements or information that may be contained in this presentation or to revise them to reflect the occurrence of future unanticipated events.

Qualified Person: The qualified person for Hannan’s projects, Michael Hudson, CEO for Hannan, and a Fellow of the Australasian Institute of Mining and Metallurgy, has reviewed and verified the contents of this presentation.

08 June 2017

Right Project - Right Time - Right Place

Why Hannan Metals?

- **100% ownership** of the flagship high-grade **Kilbricken** Zn-Pb-Ag-Cu discovery in Ireland;
 - Intersections include **DH46: 20.5m @ 7.5% Zn, 9.9% Pb, 74.6g/t Ag**
 - **Major project in the hands of a tightly held, well structured junior company**, 32,000 hectare land package with 40 km trend to test;
 - Zinc has **tight supply fundamentals**, due to falling production, subdued discovery and increasing demand;
 - Ireland is a **leading global jurisdiction** for zinc mining and exploration
 - Exploration and management team with **decades of zinc exploration experience**;
- Drilling now, maiden resource calculation, metallurgical studies, and seismic Q3.



And news flow!

Corporate Metrics

TSXV:HAN OTC:PINK:HANNF

www.hannanmetals.com



INSIDERS: 33%

SHARES ON ISSUE: 27.4 M

FULLY DILUTED: 33.0 M

RECENT PRICE: C\$0.48

52 WK HIGH/LOW: \$0.05/0.51

MARKET CAP: C\$13.1 M

CASH: C\$ 1.0 M

ENTERPRISE VALUE: C\$12.1 M

HAN

HANNF



WARRANTS:

3,038,000 @ \$0.40 exp. Feb 18
 389,750 @ \$0.40 exp. Aug 18
 112,500 @ \$0.40 exp. Aug 18
 118,950 @ \$0.20 exp. Nov 18
 775,000 @ \$0.10 exp. Mar 20

OPTIONS:

30,000 @ \$0.10 exp. Dec 18
 75,000 @ \$0.40 exp. Feb 20
 1,071,000 @ \$0.10 exp. Nov 21
 50,000 @ \$0.10 exp. Feb 22



DIRECTORS

Michael Hudson (Chairman & CEO): *B.Sc. (Hons), MBA, FAusIMM, MAIG*

During a career spanning 26 years Mr Hudson has developed/ financed exploration properties worldwide. Following ten years exploring and developing zinc-lead projects with Pasminco Ltd, the largest global integrated zinc producer at the time, he progressed to the junior mining sector. As Founder and Director of companies including Mawson Resources Ltd (TSX:MAW) and Leading Edge Materials Corp (TSXv:LEM), Mr Hudson has delivered both exploration and commercial success.

Nick DeMare (President): *CPA, CA*

David Henstridge: *B.Sc. (Hons), FAusIMM, MAIG, MGSAust*

Georgina Carnegie: *B.Com, AM Harvard*

Michael Iannacone: *B.Com, CPA, CA*

MANAGEMENT TEAM

Lars Dahlenborg (VP Exploration): *M.Sc, MAIG*

Exploration geologist with 10 years experience in Sweden, Finland, Peru and Australia. He has been critical to advancement on recent discoveries including the Rompas-Rajapalot gold project in northern Finland and the Norra Kärr HREE deposit in Southern Sweden.

Mariana Bermudez (Corporate Secretary)

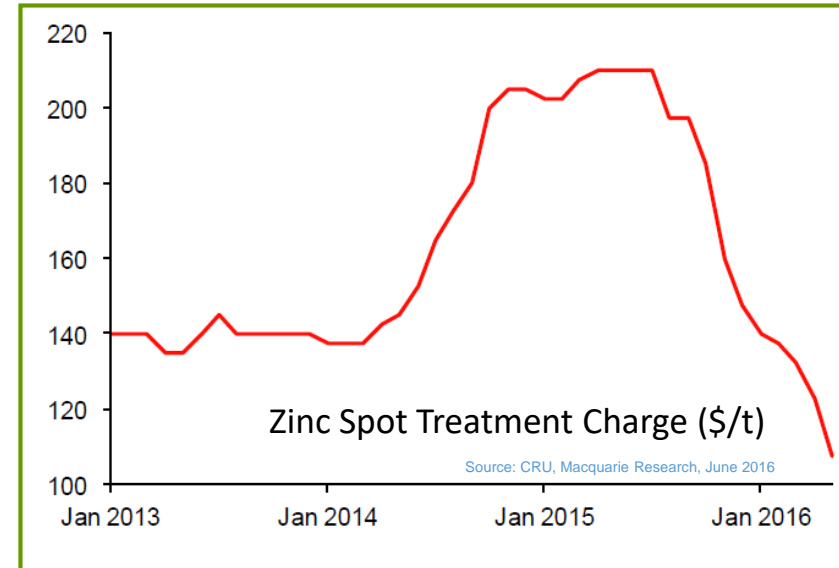
Hannan is managed by a group with careers built in the zinc industry. In recent years, the group has raised more than US\$100M for European exploration and development. With a track record of success, and significant experience in gaining social licence to operate, Hannan is well place for continued growth.



The old Kilbricken Mine, a Victorian era Pb-Zn mine worked 1834-1854. A Cornish Engine House is still visible today.

Why Zinc?

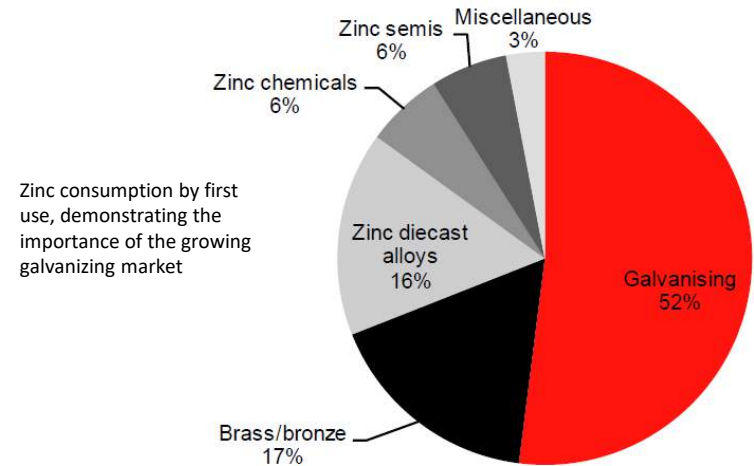
- **Tight supply fundamentals**
- **Zinc price doubled in 2016** while smelter treatment charges halved
- **Closure of the major zinc mines**
- Zinc exploration has been limited over the past 30 years
- Recent zinc discoveries well received by market.



The Facts on Zinc

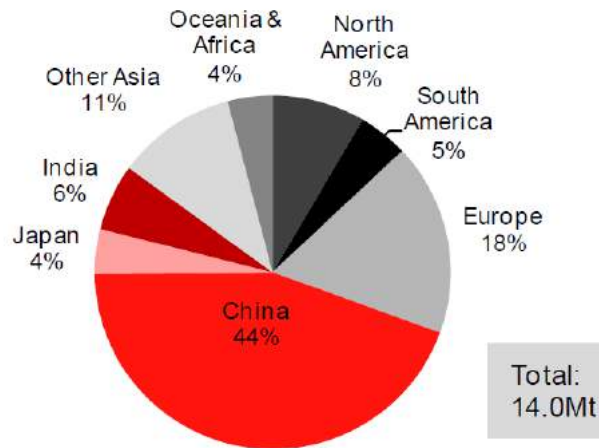
Zinc is a metal for the majors, with large discoveries as targeted by Hannan Metals, prone for takeover. Annual zinc production totals approximately 14 million tonnes. Major mines operating are:

Name	Country	Owner	T Zn Mined 2015
Red Dog	USA	Teck	567,000
Rampura Ag.	India	Vedanta	510,000
Mount Isa	Australia	Glencore	478,000
McArthur Riv.	Australia	Glencore	272,000
Antamina	Peru	Glencore/BHP	191,000
Cerro Lindo	Peru	Votorantim	177,000
Penasquito	Mexico	Goldcorp	176,000
Tara	Ireland	Boliden	133,000

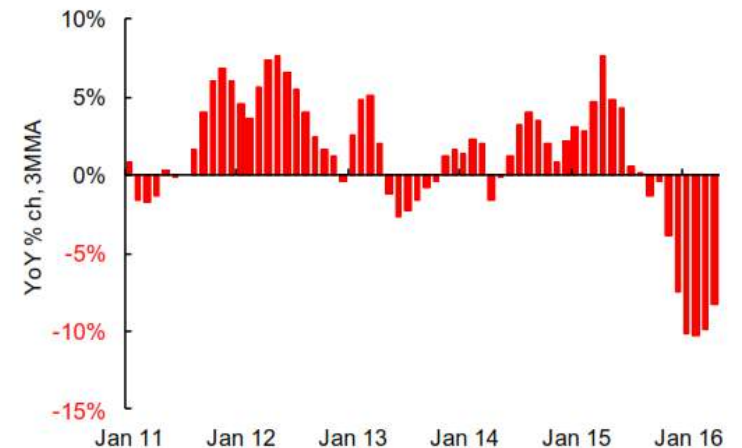


Source: CRU, Macquarie Research, June 2016

2015 Zinc Production shows widespread distribution, and highlights the prominent role played by European producers



Month on Month Zinc Production has fallen significantly from 2015. Two major mines have closed due to depleted resources



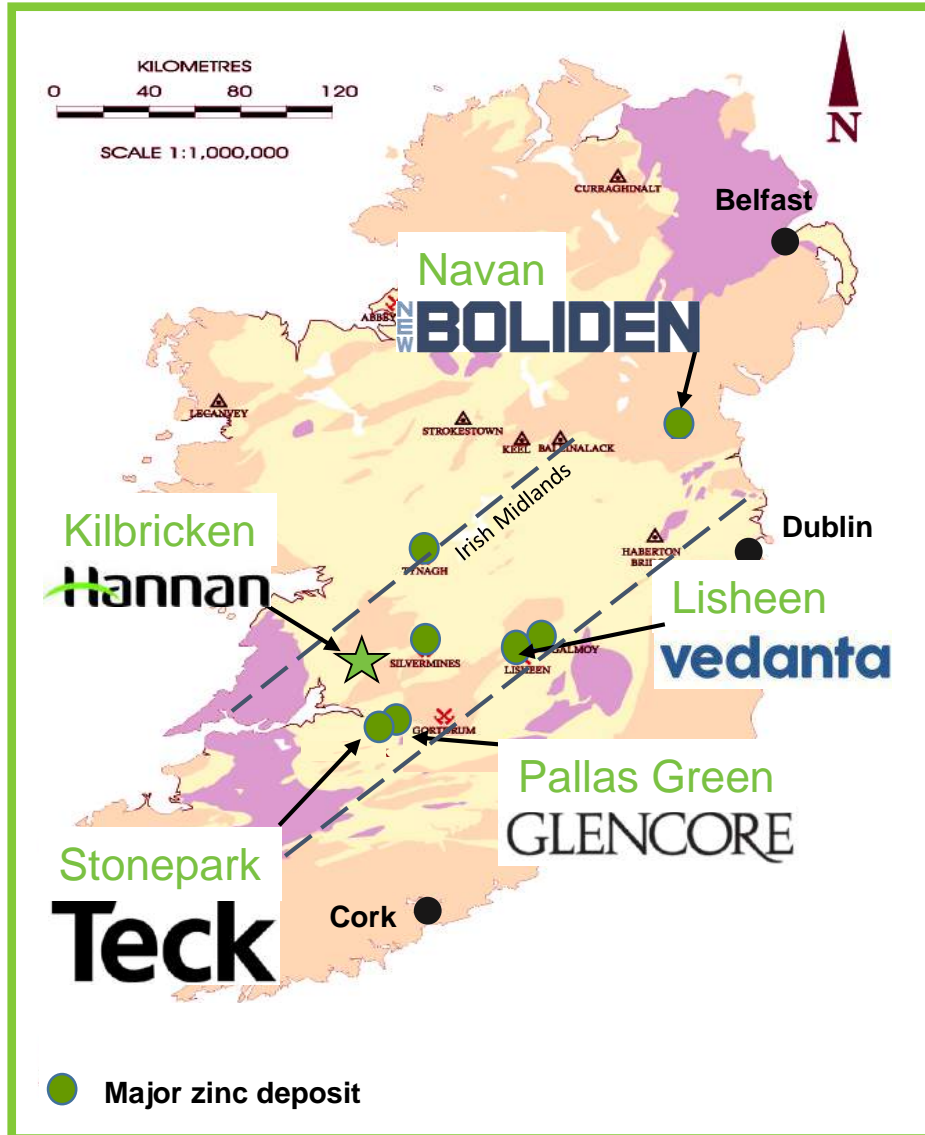
Why Ireland?

- Ireland is a **leading global jurisdiction** for zinc mining and exploration;
 - Ranked first in the world in terms of zinc discovered per sq. km;
 - In 2015, 10th largest zinc producing;
- “Irish Type” carbonate hosted deposits tend to be large and high grade;
- Ireland is an attractive jurisdiction for mining investment;
- **The country is poised for the next round of major discoveries >200m via technology shift.**



<https://www.fraserinstitute.org/categories/mining>

Ireland: A Home of Zinc Mining

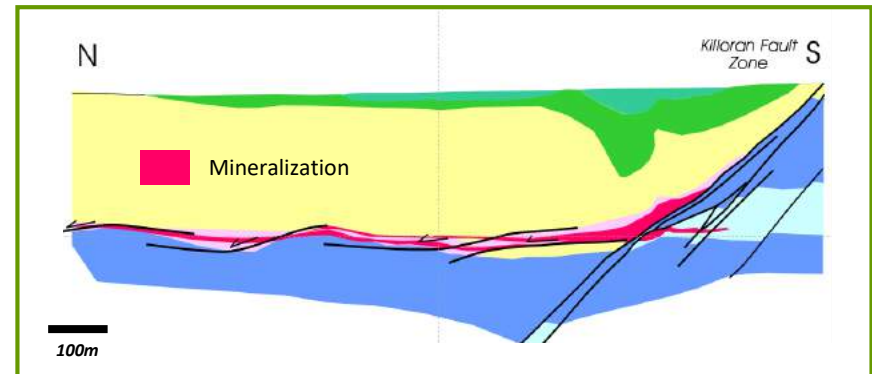
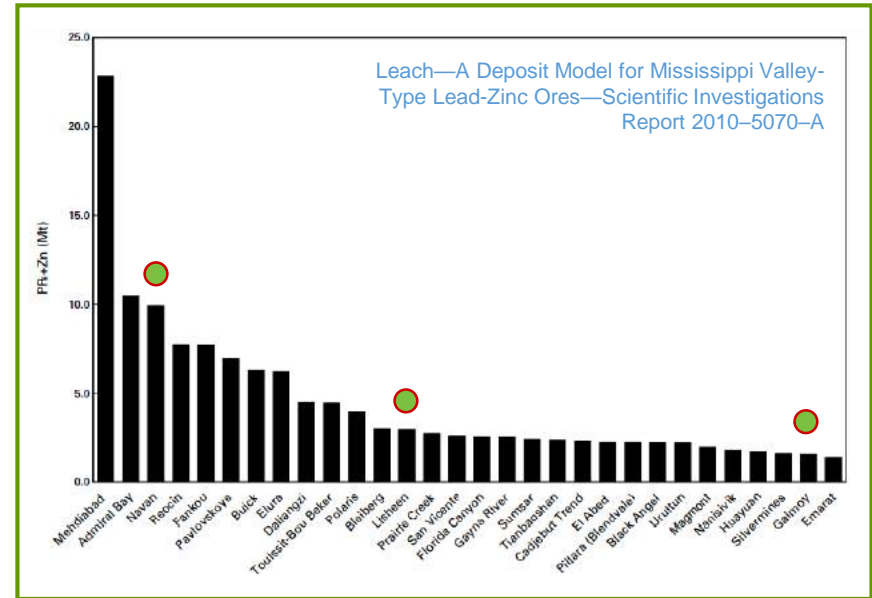


Significant Irish Zn-Pb Deposits		
Navan	111 Mt	9.8% Zn+Pb
Galmoy	6.2 Mt	12.4% Zn+Pb
Silvermines	18 Mt	8.9% Zn+Pb
Tynagh	9 Mt	11.2% Zn+Pb
Pallas Green	42 Mt	8.0% Zn+Pb
Lisheen	18.9 Mt	15.0% Zn+Pb

Since 1960, 15 “Irish-type” deposits with >1 Mt zinc/lead ore have been discovered, including the world class Navan/Tara (>100 Mt). The high grade, shallow occurrence and clean metallurgy of the orebodies, allow for a relatively low cost of mining.

“Irish Style” Deposits – An Attractive Target

- “Irish Style” deposits are a sub-set of the carbonate hosted MVT-deposits that are well known and studied globally. Three of the 30 largest MVT deposits are in Ireland;
- Deposits controls and characteristics include:
 - they are epigenetic;
 - they are not associated with igneous activity;
 - they are hosted mainly by dolostone and limestone;
 - dominant minerals are sphalerite, galena, pyrite, marcasite, dolomite, and calcite, whereas barite is typically minor to absent and fluorite is rare;
 - they occur in platform carbonate sequences commonly at flanks of basins or foreland thrust belts;
 - commonly stratabound, may be locally stratiform;
 - they typically occur in large districts;
 - the ore fluids were basinal brines with ~10 to 30 wt. percent salts;
 - the most important ore controls are faults and fractures, dissolution collapse breccias, and lithological transitions;
 - sulfides occur as replacement of carbonate rocks and to a lesser extent, open-space fill;
 - alteration consists mainly of dolomitization, host-rock dissolution, and brecciation.



Example cross section of a typical “Irish Style” deposit (Lisheen) showing the close association of ore (in pink) to large scale, often syn-sedimentary basin faults. Mineralizing fluids were interpreted as moving from the sedimentary basin, along faults to be concentrated in flat-lying carbonate horizons.

Lisheen (Vedanta Resources)

- Major underground base metal mine which operated for 2 decades as one of the largest producers of zinc in Europe; closed Jan 2016.
- A pre-mining resource of **18.9 Mt @ 15.0% Zn+Pb** is quoted, however alternative resources at a lower cut-off of 21.0 Mt @ 12% Zn, 2% Pb are also published. Average depth of mineralization 170m below surface.

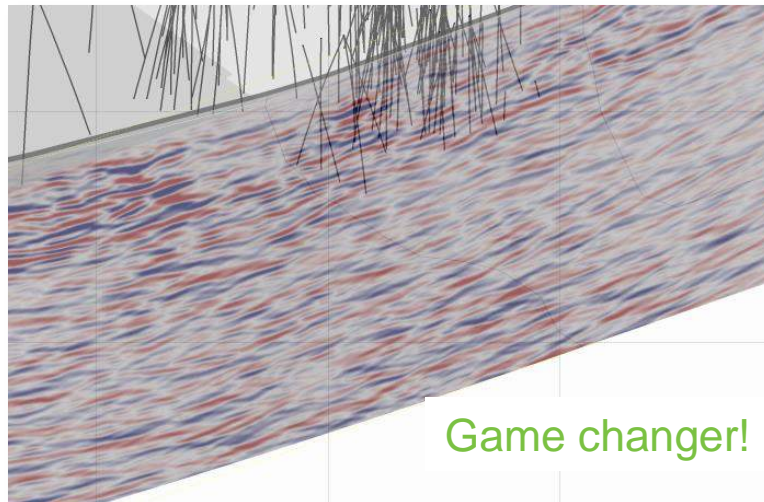
Galmoy (Lundin Mining)

- Major underground mine, that operated for 12 years, with closure in 2009. Discovery was made in the 1960's with soil sampling and geophysics both crucial.
- Pre-mining resource of **6.2 Mt @ 12.4% Zn+Pb**. Two main orebodies were mined, being the 700x450x6m CW-Orebody, and 450x300x8m G-Orebody.

Kilbricken (100% Hannan Metals)

- Drill results indicate a zinc mineralized zone measuring 590m by 250m with drill hole intercepts including grades between 3% and 10% Zn; plus 50g/t and 80g/t Ag. This is based on 222 drill holes for 118,000m. Mineralization discovered to date averages 400m below surface, and is open in all directions.





Kilbricken was discovered in 2007 by Belmore Resources, 166 years after and 400m below a 1834 Victorian era mine.

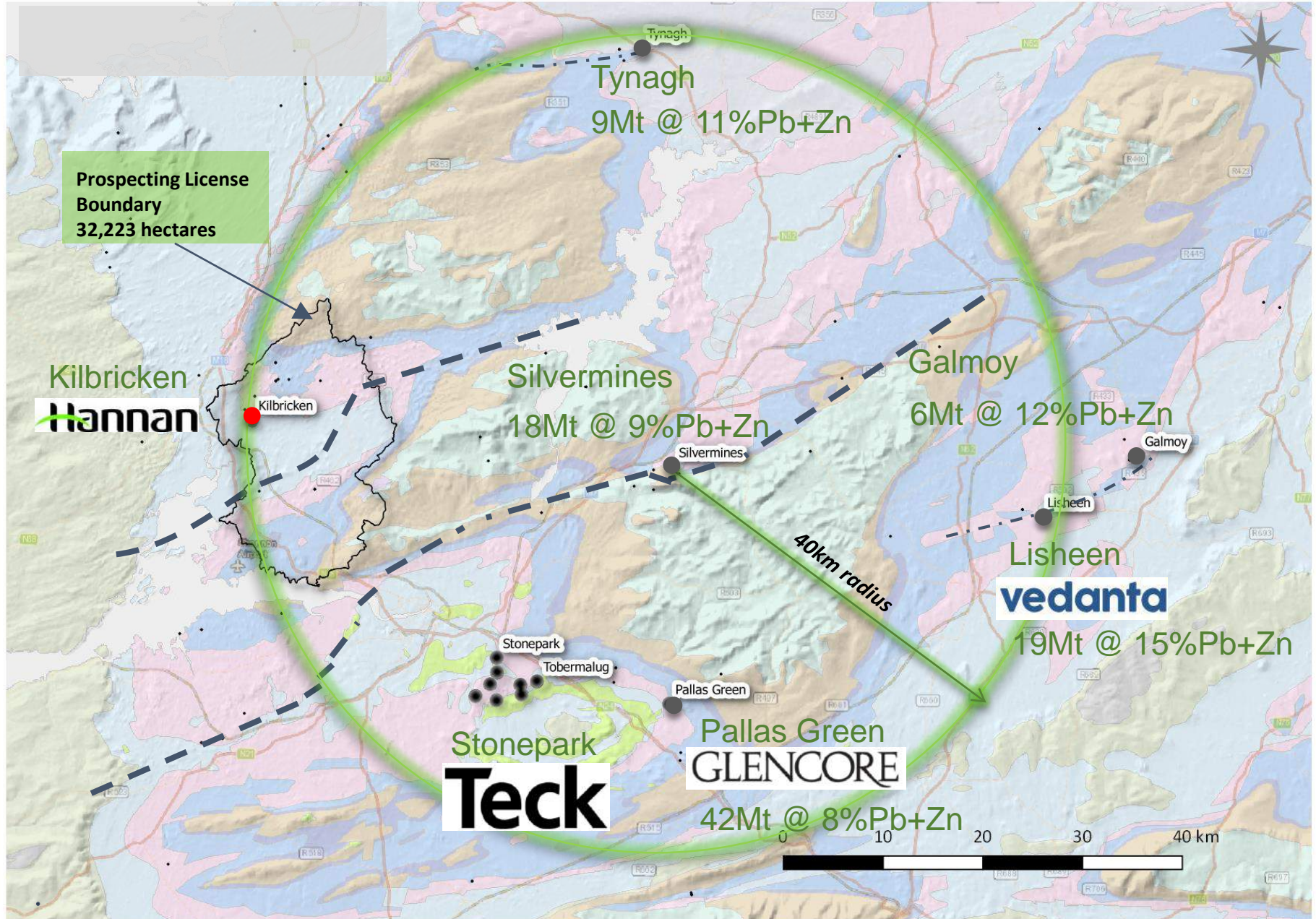
Subsequently bought by Lundin Mining Ltd for an implied price of £16m (or €20m).

Since then, 278 holes for 134,000m of diamond drilling have been completed on the project, which is ready to explore and expand.

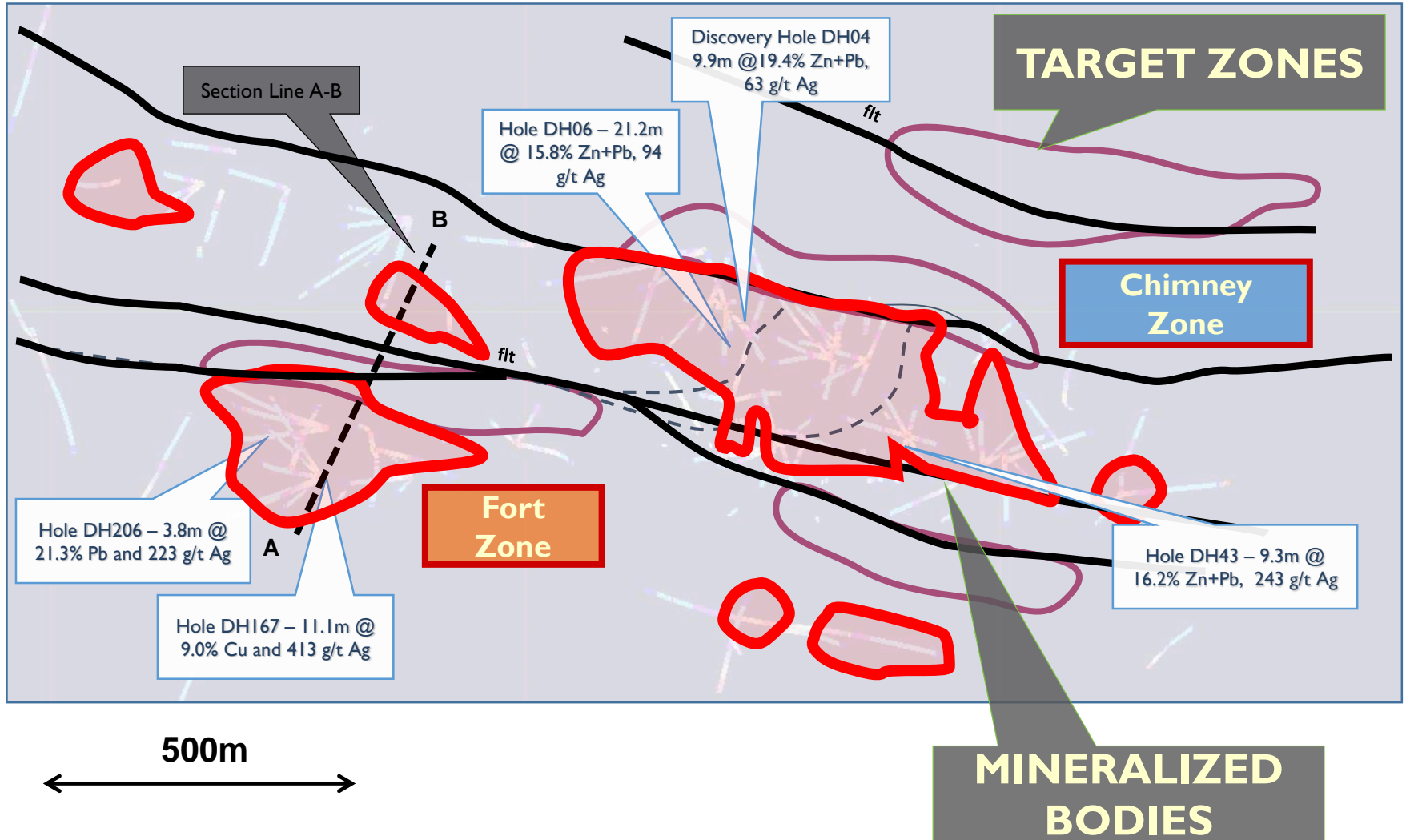
Acquisition

Consideration US\$1M. Lundin retains a 2% net smelter royalty, subject to a 0.5-per-cent buyback right for US\$5M and a one-time bonus payment of US\$5M decision to mine.

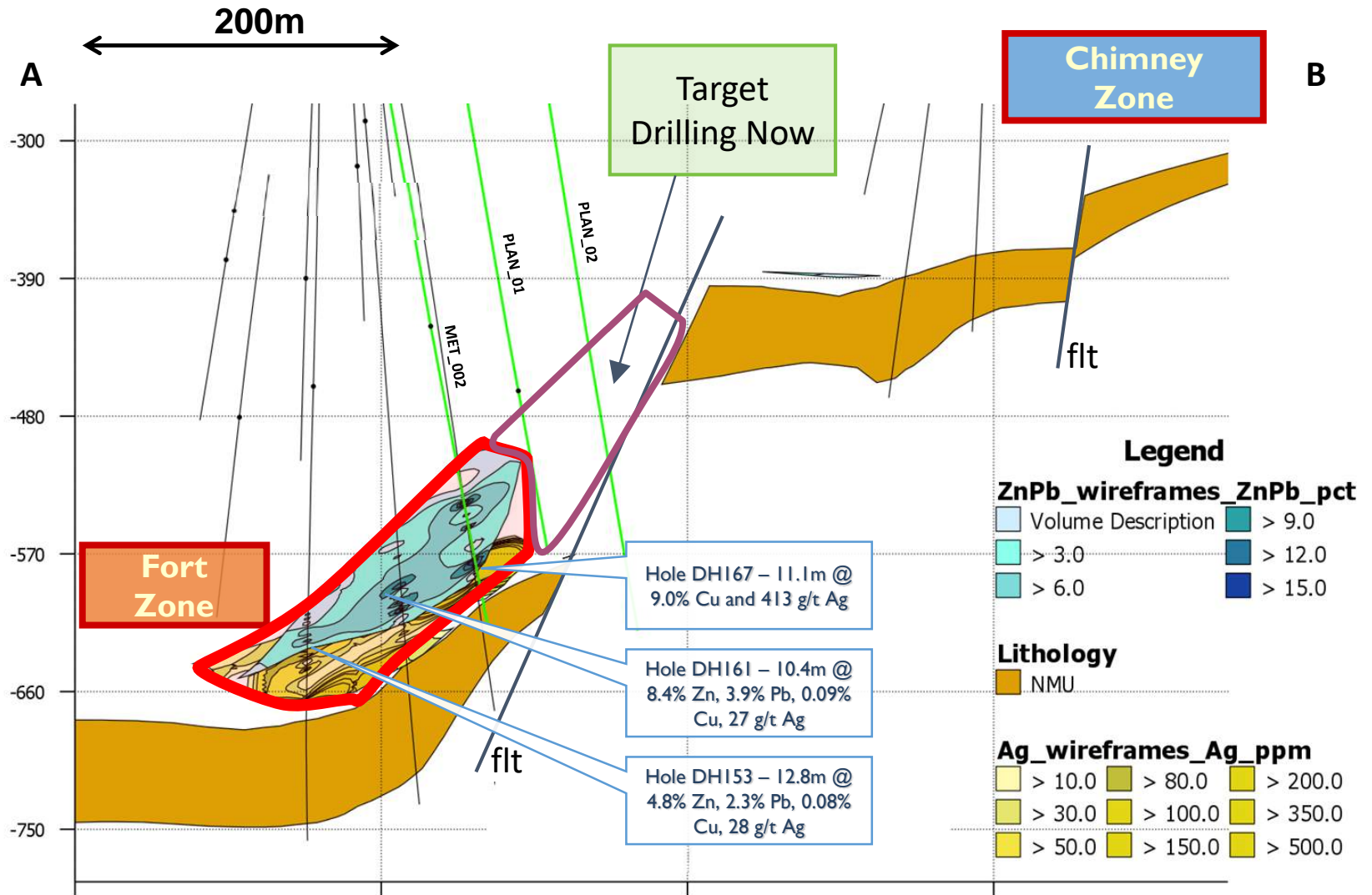
Regional Setting >95Mt @ >10%Zn-Pb



Deposit Scale: Plan View



Internal Opportunities: Cross Section

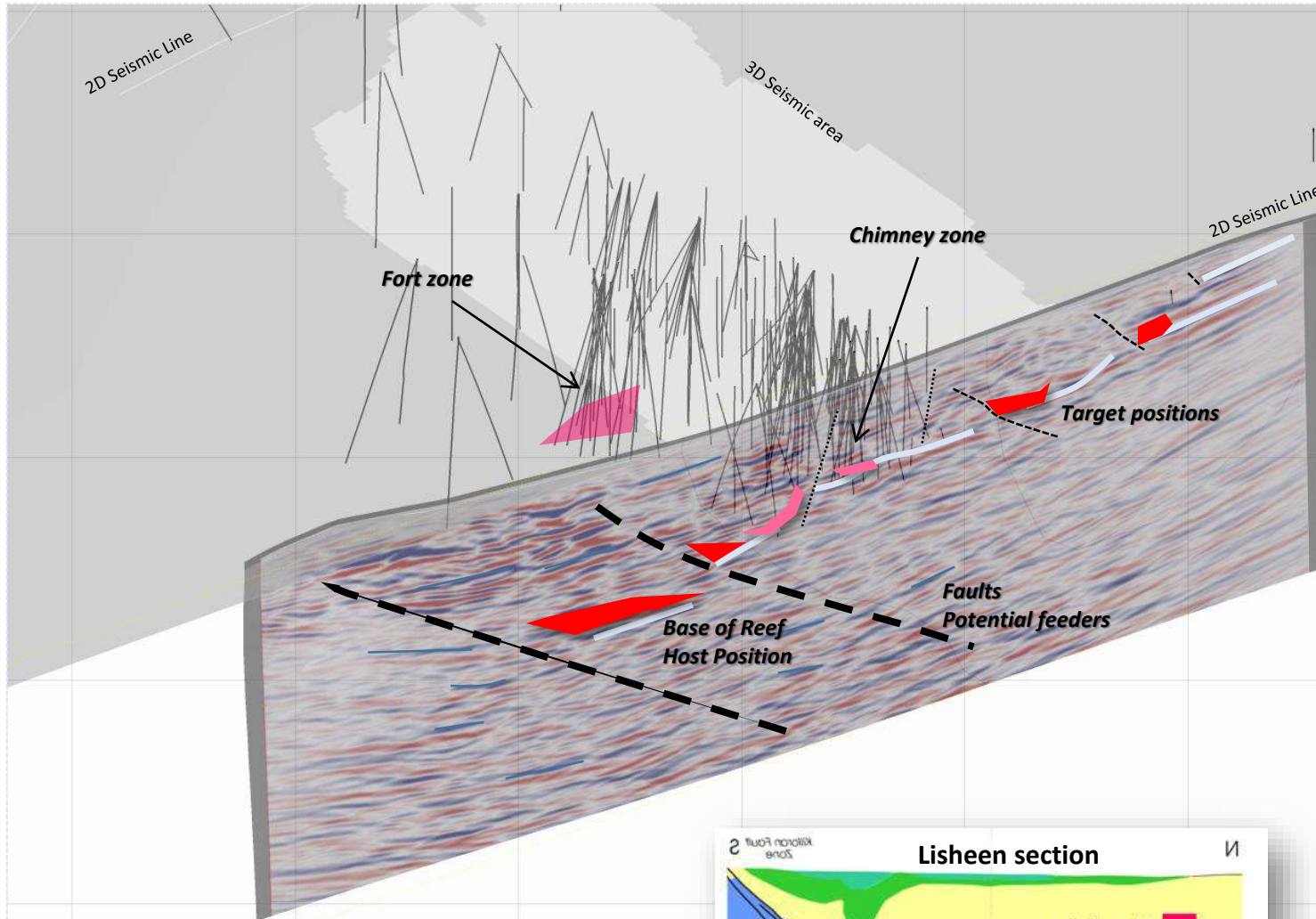


- Kilbricken is characterised by silver grades that are higher than typical Irish base metal deposits. High grade copper mineralization has also been discovered in drilling.

DH 46	20.5m @	7.5% Zn, 9.9% Pb, 0.07% Cu, 74.6g/t Ag	from 415.3m
DH06	21.3m @	11% Zn, 4.8% Pb, 0.06% Cu, 94.4g/t Ag	from 441.9m
DH50	11.8m @	9.8% Zn, 5.7% Pb, 0.07% Cu, 178.2g/t Ag	from 484.6m
DH43	9.4m @	4.1% Zn, 12% Pb, 0.52% Cu, 242.8g/t Ag	from 442.1m
DH04	10.0m @	13.8% Zn, 5.5% Pb, 0.08% Cu, 62.8g/t Ag	from 448.1m
DH52	19.3m @	7.2% Zn, 1.2% Pb, 0.18% Cu, 64.6g/t Ag	from 425.7m
DH44	17.2m @	2.9% Zn, 4.4% Pb, 0.11% Cu, 83.5g/t Ag	from 447.9m
DH167	4.5m @	0.8% Zn, 2.6% Pb, 18.91% Cu, 867.6g/t Ag	from 616.5m
DH161	10.4m @	8.4% Zn, 3.9% Pb, 0.09% Cu, 26.5g/t Ag	from 607.0m
DH206	10.0m @	0.9% Zn, 8.7% Pb, 0.16% Cu, 90.7g/t Ag	from 619.0m
DH111	4.1m @	21.5% Zn, 5.7% Pb, 0.1% Cu, 95.4g/t Ag	from 447.6m

Hardrock Seismic Technology: Game Changer

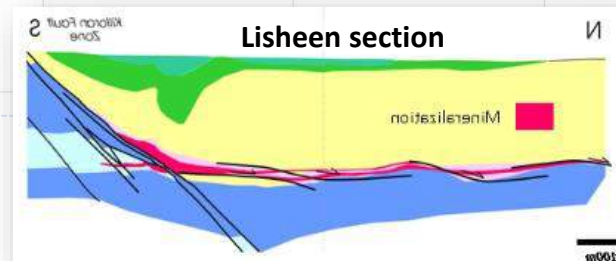
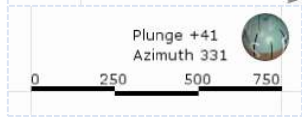
TSXV:HAN OTC:PINK:HANNF
www.hannanmetals.com



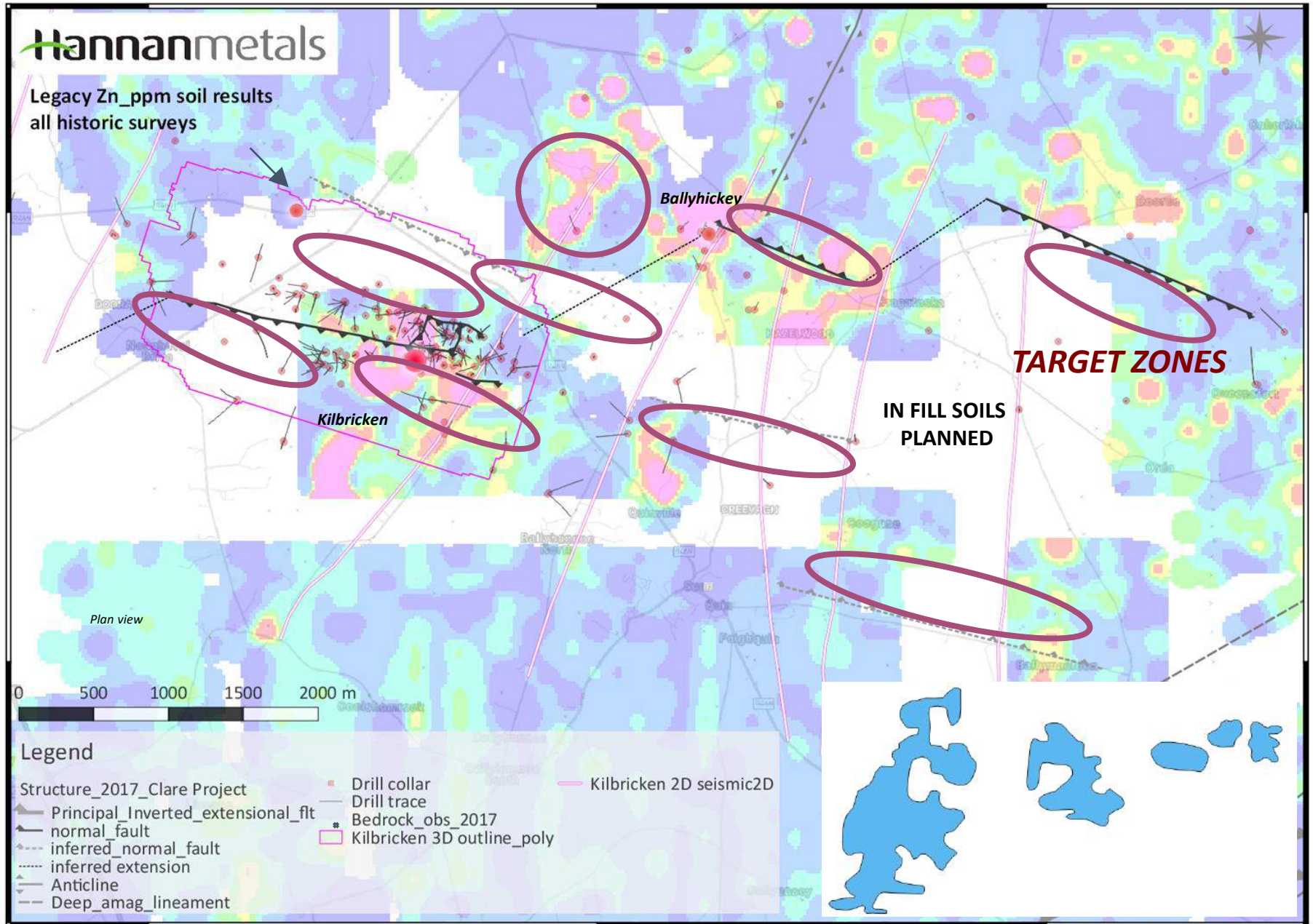
Lundin Mining completed 2D (2012) and 3D (2011) seismic traverses across Kilbricken and its regional extensions

Advanced re-processing, allows targeted exploration at the appropriate stratigraphic levels, adjacent to fertile extension feeder faults

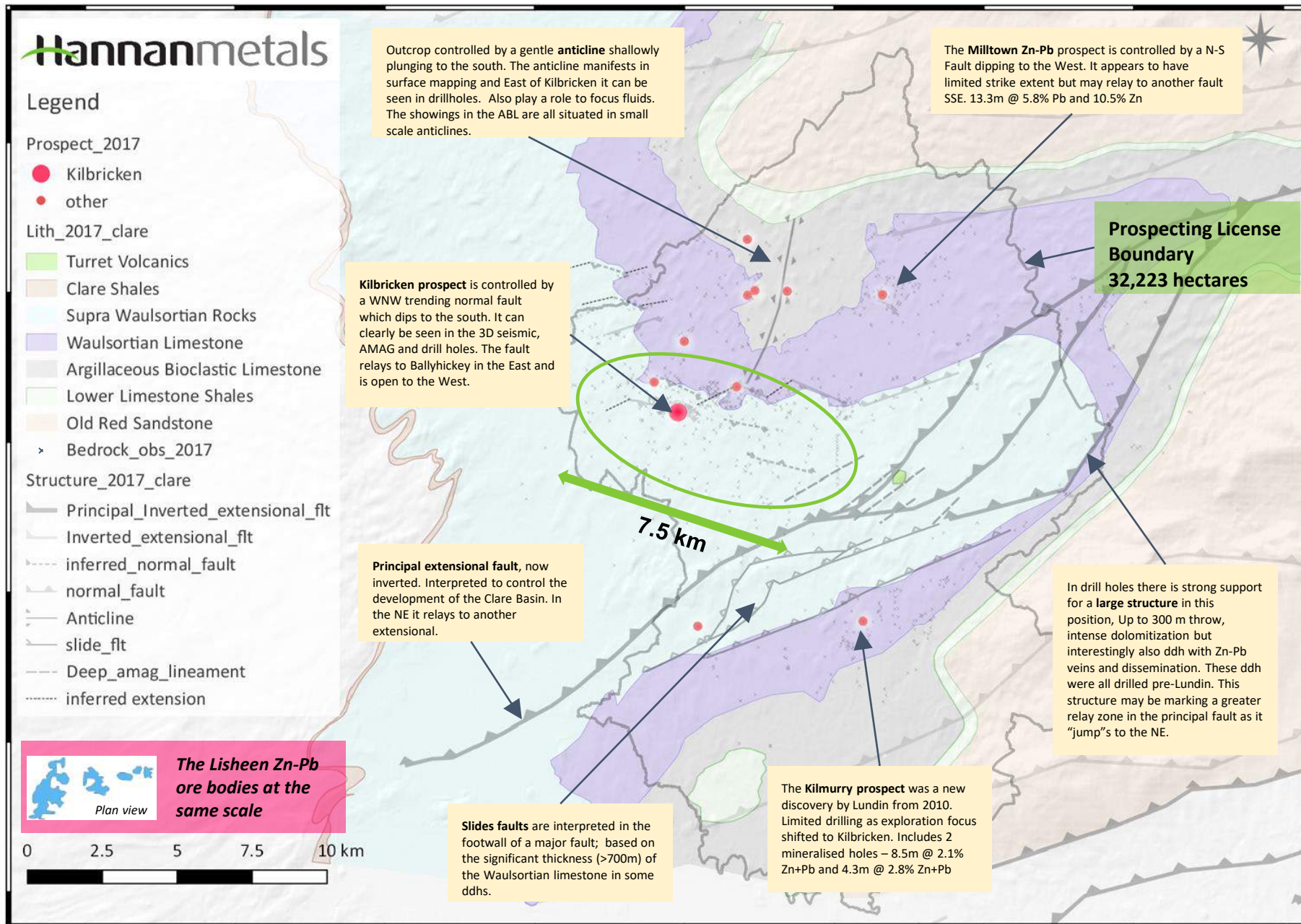
Hannan owns only 3D seismic survey completed in Ireland to date



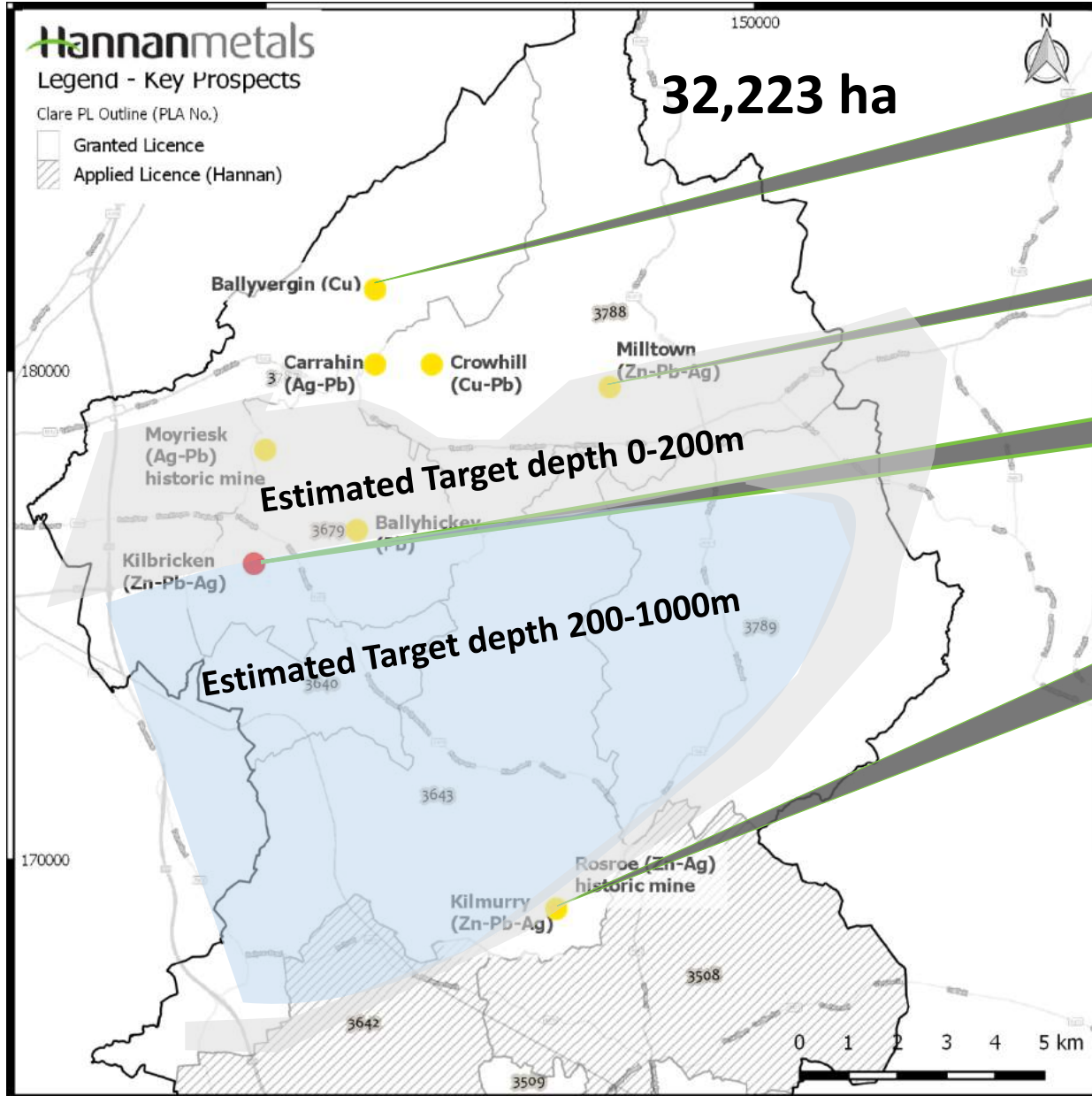
Semi-Regional Targets: Seismic + Geochem



The Clare Project : 40km of Targets



Clare: Shallow to deep opportunities



Ballyvergin Cu Deposit
Inc. 31.5m @ 1.0% Cu

Milltown Zn/Pb Deposit
Inc. 13.3m @ 5.8% Pb and 10.5% Zn

Kilbricken Deposit
Zn Pb Ag Cu

Kilmurry Prospect
2 mineralised holes – 8.5m @ 2.1% Zn+Pb and 4.3m @ 2.8% Zn+Pb

In Ireland, claims holders include: Teck, Boliden, Vedanta, Glencore, Aventus, Group Eleven, Erris, Unicorn, Connemara.

PLs issued for 6 years. If work and expenditure satisfactory, normal practice licence re-issued

Mineralogical test work by SGS on 14 samples. Findings based on what is mineralogically possible, under ideal separation conditions

For composite sample results:

- Sphalerite grades between 98% and 81% for recoveries of 78% to 95%, respectively.
- Galena grades between 98% and 84% for recoveries of 88% to 96%, respectively;
- No red flags for deleterious metals;
- Conventional Pb-Zn flotation circuit envisaged;
- Hannan Metals will undertake further bench top metallurgical studies during its **Phase 1** drill program.

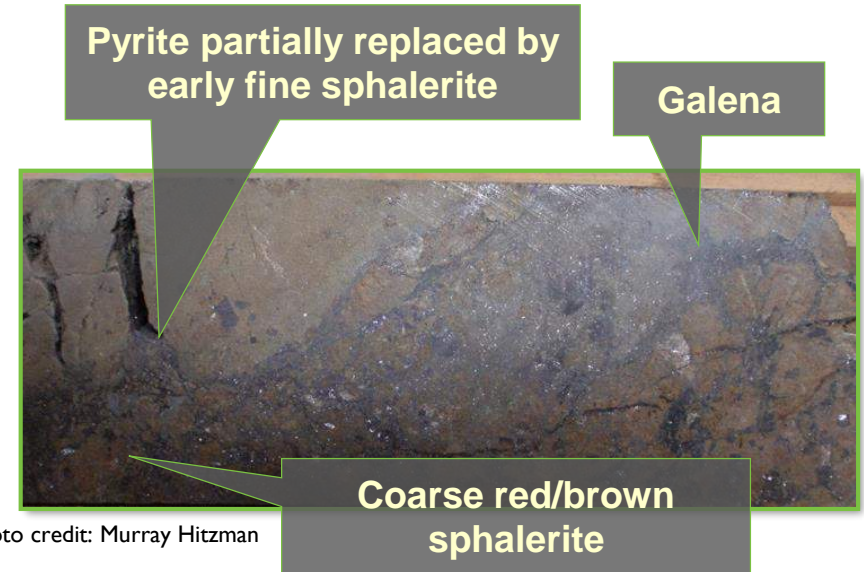
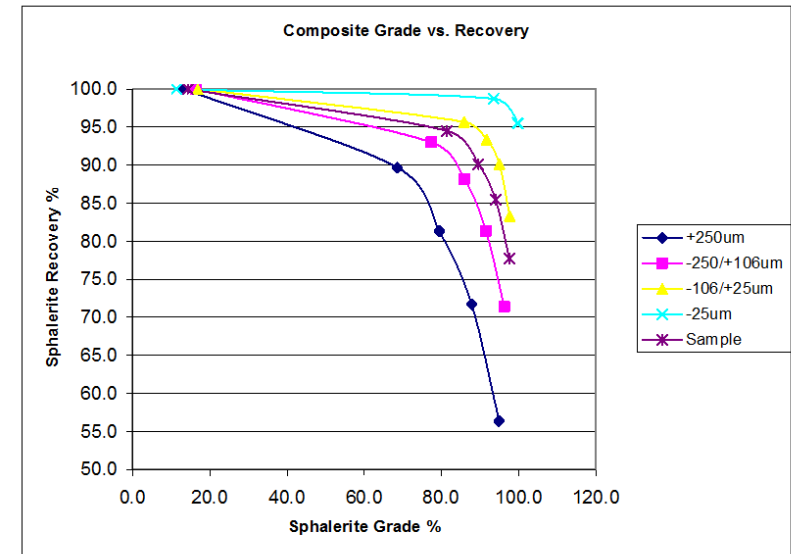


Photo credit: Murray Hitzman



- Diamond drilling commenced early May 2017;
 - First stage of the program will focus on gaining metallurgical samples and expanding the footprint of the known mineralization at Kilbricken;
 - Second stage will look to test semi-regional targets within 1 to 2 kms from known mineralization;
- Resource evaluation geologists working on maiden resource for Kilbricken;
- In-fill soil sampling around Kilbricken;
- Q3 2017, 25 km regional 2D seismic line and infill 2D seismic lines along the Kilbricken structural trend.



For more information : info@hannanmetals.com

The logo for Hannanmetals features the company name in a bold, black, sans-serif font. A vibrant green swoosh underline is positioned beneath the 'H' and extends across the top of the 'a' and 'n' characters.

Hannanmetals

TSX.V : HAN

Right Project - Right Time - Right Place